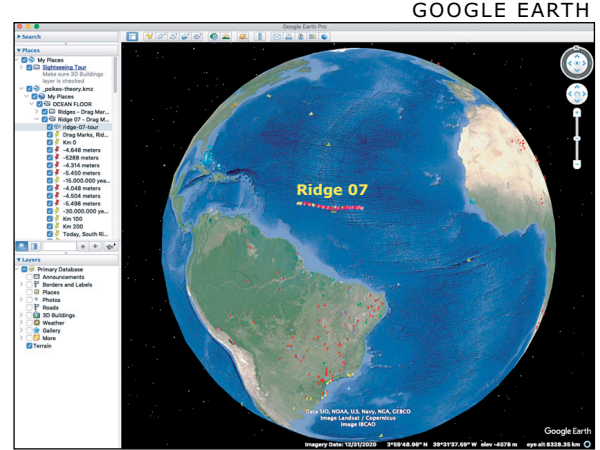
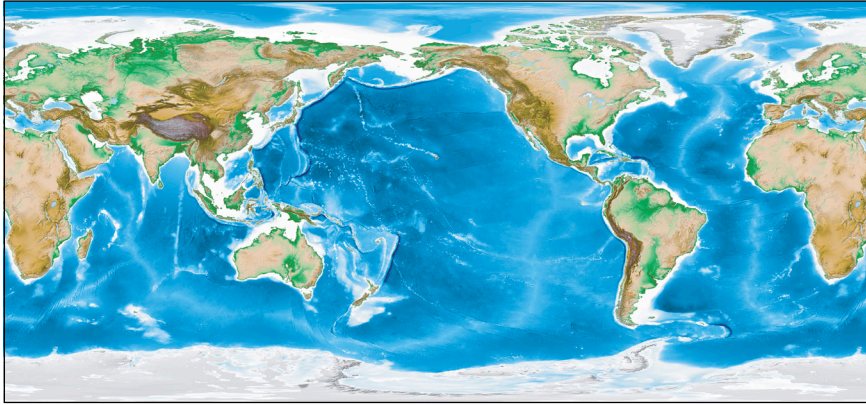


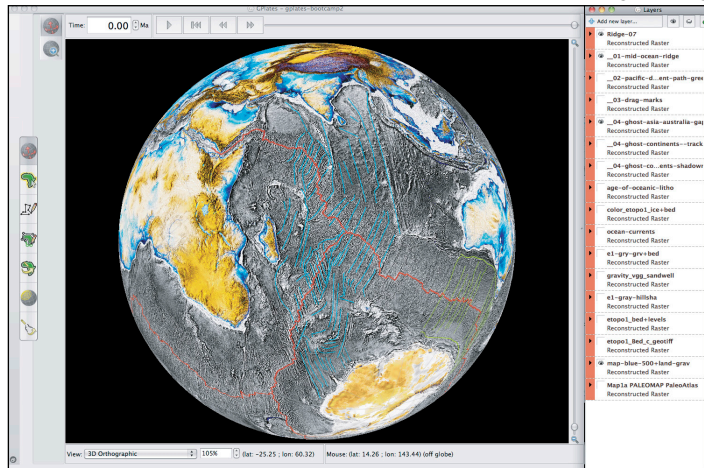
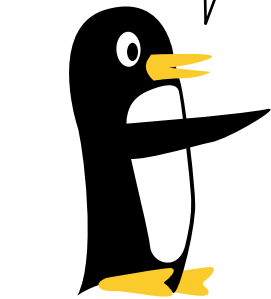
BOOT CAMP # 3

DISCOVER THE DRAG MARKS PATTERN ON THE DEEP OCEAN FLOOR!

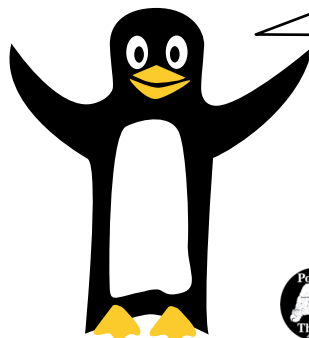
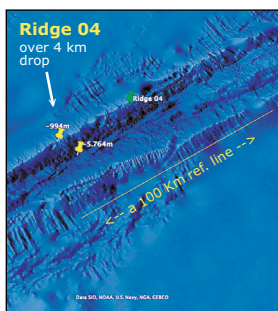
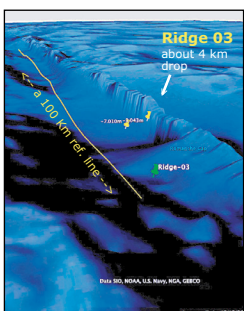
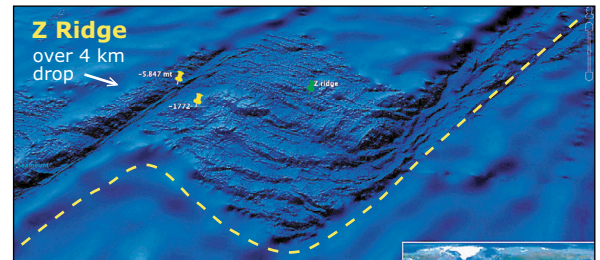
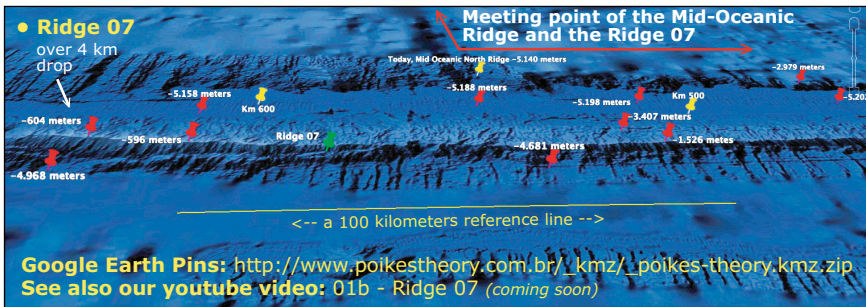
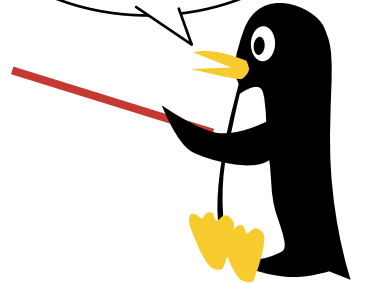


HI, MY NAME IS LILY AND I'M GOING TO SHOW YOU HOW YOU CAN DISCOVER THE DRAG MARKS PATTERN ON THE DEEP OCEAN FLOOR!

WITH SIMPLE AND FREE TOOLS LIKE GOOGLE EARTH AND GPLATES, YOU CAN LOAD NOAA*1 MAPS AND POIKE'S MAPS!



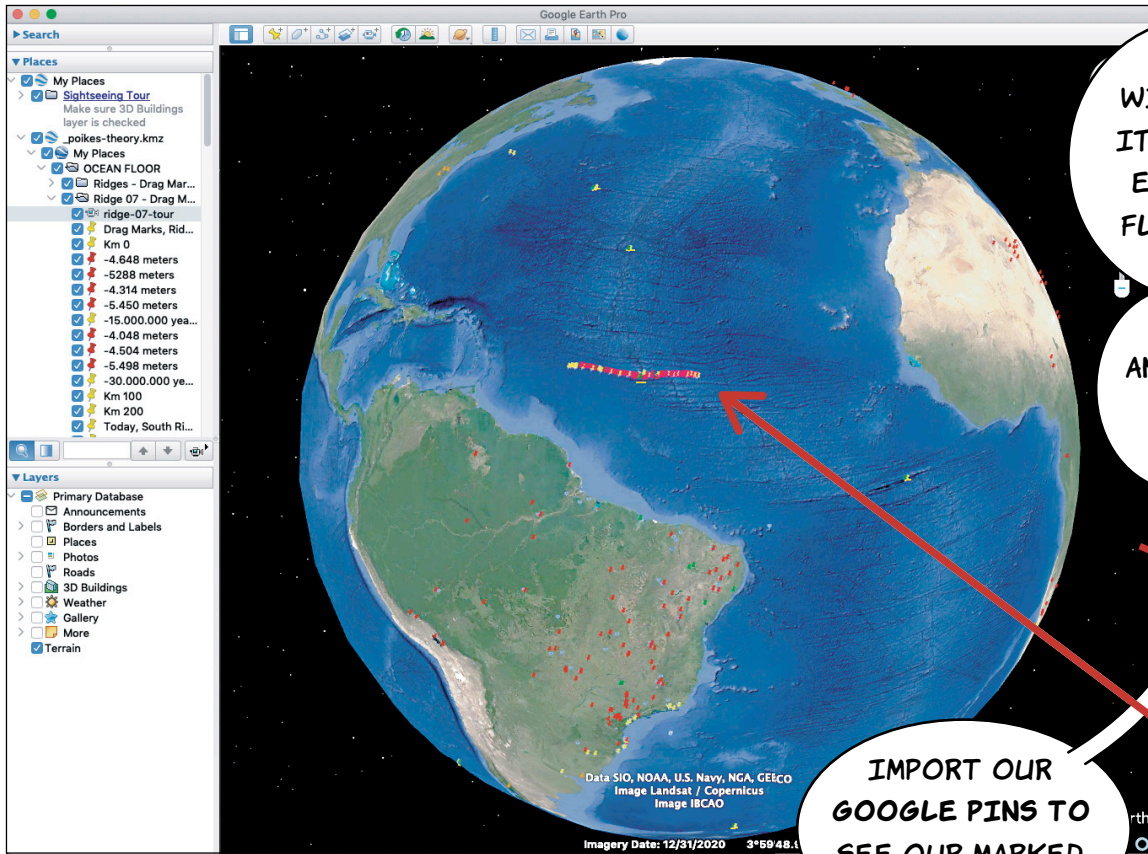
COME WITH US TO EXPLORE THE CHAINS OF MOUNTAINS IN THIS INCREDIBLE PATTERN OF THE DEEP OCEAN FLOOR!



COME WITH US TO EXPLORE THE CHAINS OF MOUNTAINS IN THIS INCREDIBLE PATTERN OF THE DEEP OCEAN FLOOR!

in the PDF version, the text with **ASTERISK *** will have a **Hyperlink** to the **Internet** at the footer.

*1 We work the maps downloaded from NOAA (National Oceanic and Atmospheric Administration). <http://www.noaa.gov>



WE CAN START WITH GOOGLE EARTH! IT IS GREAT TOOL TO EXPLORE THE OCEAN FLOOR! HERE IS SOME TIPS!

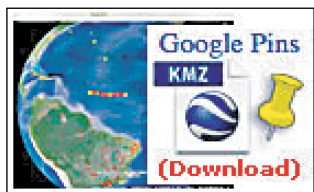
JUST DOWNLOAD AND INSTALL GOOGLE EARTH TO FOLLOW WITH US!



IMPORT OUR GOOGLE PINS TO SEE OUR MARKED RIDGES!



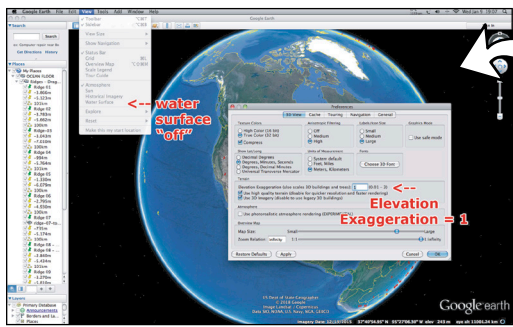
RIDGE 07 PINS



_poikes-theory.kmz.zip

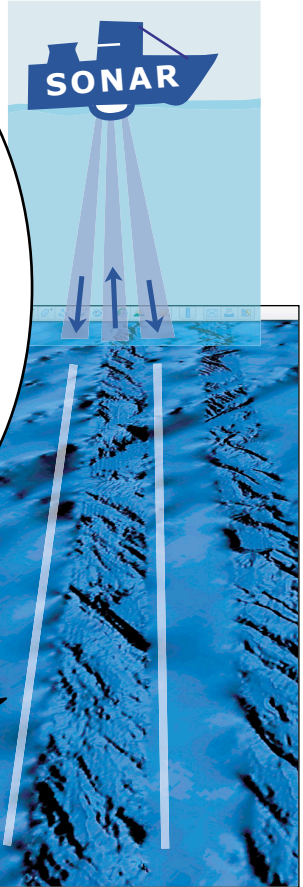
BY DOWNLOADING THE _poikes-theory.kmz.zip*1 FILE! THEN UNZIP IT AND OPEN WITH YOUR GOOGLE EARTH!

Check our Boot Camp Online Web Site*2 for videos, links and tutorials on Google Earth under BCO Resources / Google Earth tab.



ALSO YOU MAY NEED TO CHECK YOUR GOOGLE EARTH SETTINGS!*3 TO SEE THE RIDGES AS WE DO!

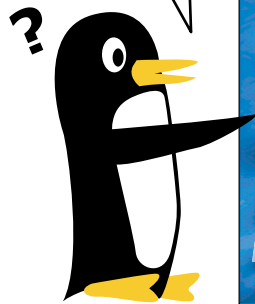
A CURIOSITY! THESE RENDERED RANDOM TRACKS ACROSS THE OCEAN FLOOR ARE MADE BY BOATS! MAPPING THE OCEAN FLOOR WITH SONAR EQUIPMENT! (BATHYMETRY). THAT'S WHY THEY LOOK SO SHARP!



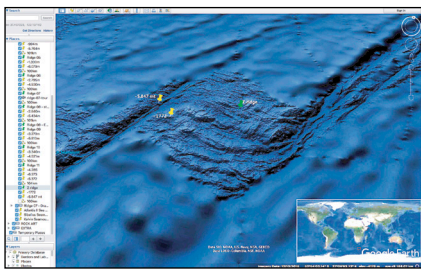
There is only some rendered parts of the ocean floor, but most of it still blurred, not rendered! Because is difficult and time consuming to get data from de Deep Ocean Floor,



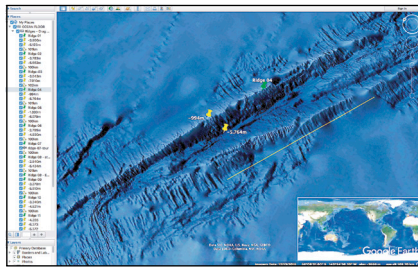
RIDGE 04, 4.7 Km drop.



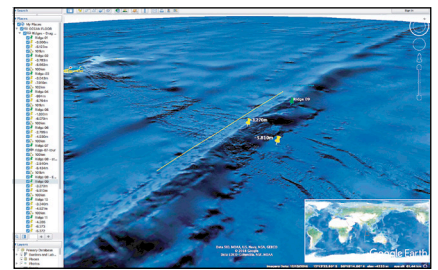
*1 - KMZ file for Google Earth, direct link to download: http://www.poikestheory.com.br/_kmz/_poikes-theory.kmz.zip
 *2 - Boot Camp Online Web Site. (Publications and Resources) Web Site: <http://www.bootcamp.poikestheory.com.br>
 *3 - Google Earth Settings: (our settings) <http://www.poikestheory.com.br/bco/ge-settings.html>



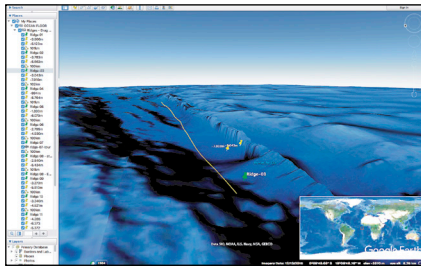
RIDGE Z, 4.1 Km drop.



RIDGE 04, 4.7 Km drop.

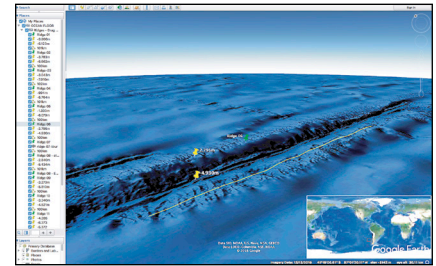


RIDGE 09, 2.5 Km drop.

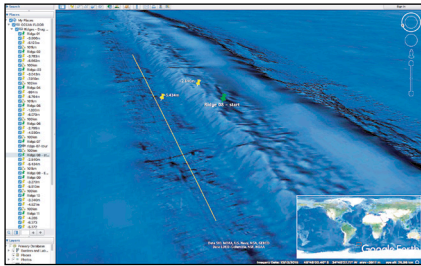


RIDGE 03, 3.9 Km drop.

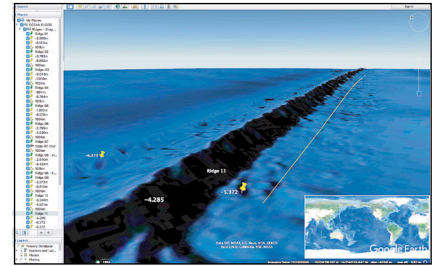
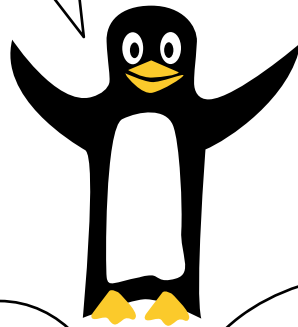
THOSE ARE SOME RIDGES WE MARK DOWN FOR YOU TO FOLLOW WITH OUR GOOGLE EARTH PINS! OR TO WATCH IT ON YOU TUBE: DEEP OCEAN FLOOR RIDGES!*4



RIDGE 06, 2.1 Km drop.



RIDGE 08, 2.5 Km drop.



RIDGE 11, 2 Km drop.

COME DIVE WITH US! WE FOLLOWED RIDGE 07 FOR A 1000 KM ON A TOUR! PLACING A GOOGLE PIN FOR EVERY 100 METERS AND MARKING ITS HIGHS AND LOWS ALONG THE WAY!

WILE IT CROSS THE MID OCEAN RIDGE! IN TWO DISTINCTIVE PLACES! NORTH AND SOUTH!

AND SEE IT SINKING INTO THE SEDIMENT NEAR THE CONTINENTAL MARGIN!

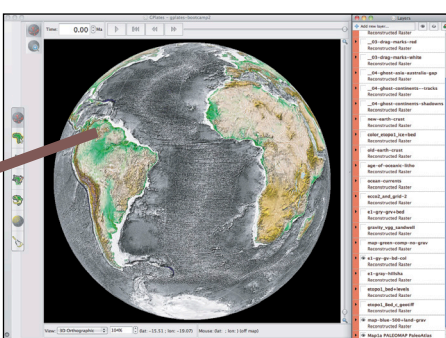


HEI LILY! SHOW THEM THAT WE CAN SEE MORE!

you can follow this tour with our Google Pins Tour or watch on our YouTube! Videos*5/*6

OVERLAYING THE BATHYMETRIC MAPS WITH THE GRAVITY MAP REVEALS THE SUBMERGED PARTS OF THESE RIDGES!

YES GRANDPA! I WILL SHOW THEM IN THE NEXT PAGES!



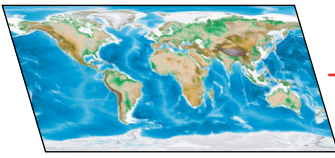
RIDGE 07, 4.4 Km drop.

*4 - You Tube Video Tour: 00a - Deep Ocean Floor Ridges (en-us), <https://youtu.be/TWLxrMioiE8>

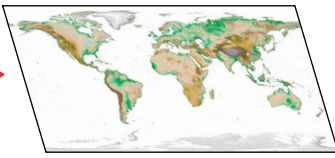
*5 - You Tube Video Tour: Ridge 07 no water, <https://youtu.be/XmAPIFzt8XM>

*6 - You Tube Video Tour: Ridge 07 with water, <https://youtu.be/tKJ5uv2igAI>

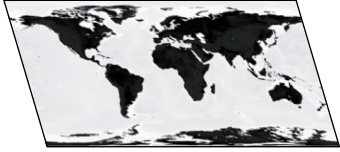
ETOPO 1 COLOR



CONTINENTS ONLY

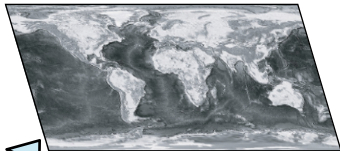


ETOPO 1 BEDROCK



< ORIGINAL

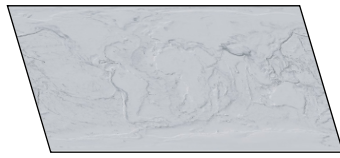
ADJUSTED >



ETOPO 1 BEDROCK

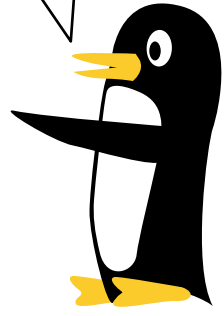
You can see our videos on Etopo1 Bedrock Map being adjusted on How we work our maps*1.

GRAYSCALE HILL SHADE

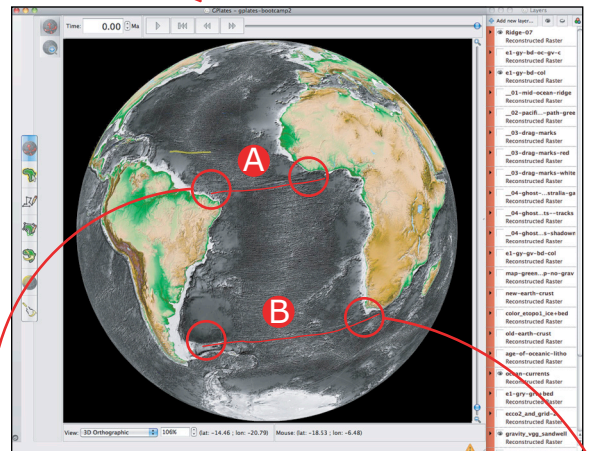
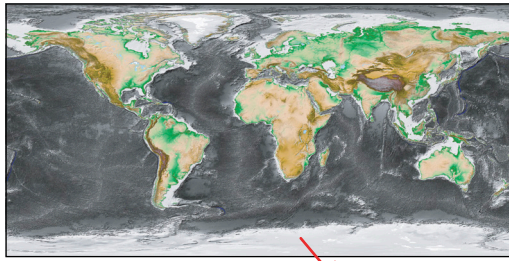


IT TOOK HIM SOME TIME TO FIGURE OUT HOW TO ADJUST THE SHADOWS ON THE ETOPO1 BEDROCK MAP! BUT IT WAS WORTH IT! THIS PROCESS INCREASED THE RIDGES VISUALIZATION!

A LONG TIME AGO! BEFORE I WAS EVEN BORN! GRANDPA POIKE WAS ALREADY WORKING ON THESE MAPS! SINCE THE EARLY 2000S! ADJUSTING AND OVERLAYING THEM! LOOKING FOR A BETTER VIEW OF THE DEEP OCEAN FLOOR!

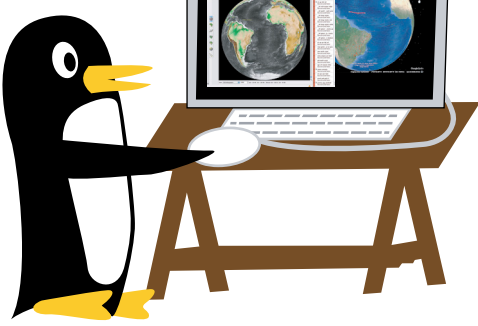


ETOPO 1 COLOR + BEDROCK + HILL SHADE

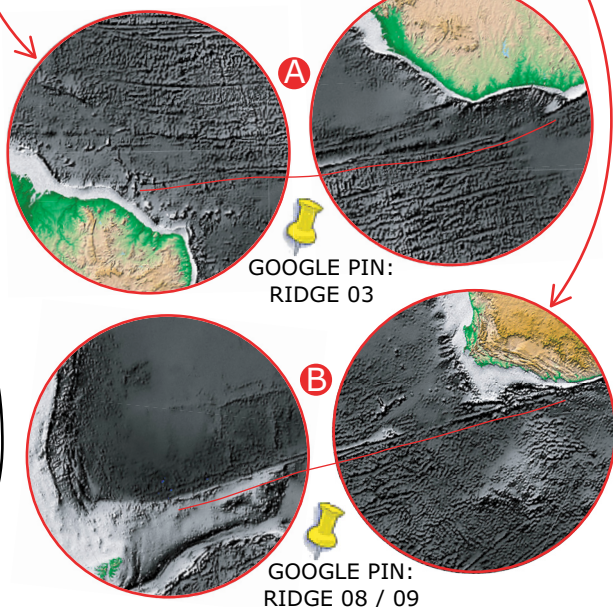


NO GRAVITY MAP OVERLAY

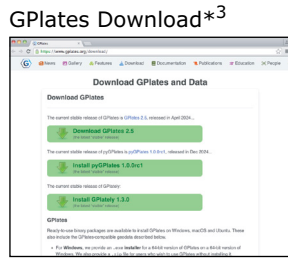
AN IMPORTANT TOOL! GPLATES! WITH GPLATES INSTALLED YOU CAN LOAD OUR MAPS AND LAYERS ONTO THE GLOBE FOR VISUAL ANALYSIS! COMPARE IT WITH GOOGLE EARTH! AND PLAY THE PALEOMAP TIMELINE!



ON THIS COMPOSITE MAP YOU ALREADY CAN SEE SOME OF MANY INTERCONTINENTAL RIDGES! AND WE HAVE A NICE COLLECTION OF MAPS FOR DOWNLOAD AT OUR WEB PAGE! POIKE'S THEORY, EARTH MAPS*2



Our Tutorials for GPlates*3 we'll focus on how to use GPlates as a Visual Interface, showing how to load maps and layers into the globe, and play the Paleomap Timeline for visual analysis. GPlates advanced features like python programming won't be covered, for that you can look at Earth Byte Web Site and GPlates Portal.

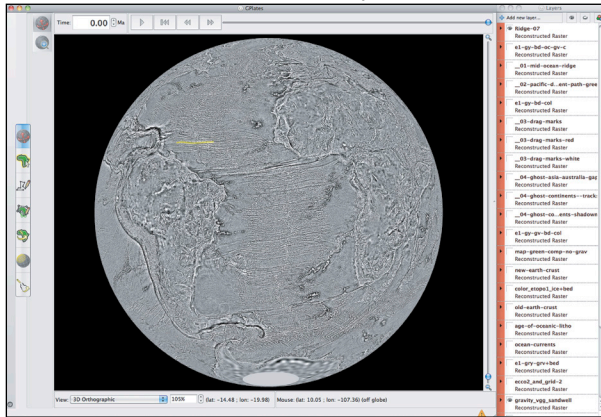


*1 - How we work our maps (videos) <http://www.poikestheory.com.br/bco/how-to-maps.html>
*2 - Poike's Theory Earth Maps (our maps collection) http://www.poikestheory.com.br/_earth-maps.html
*3 - Gplates (links, tutorials and videos) <http://www.poikestheory.com.br/bco/earthbyte-gplates.html>

< Improved Gravity Map Reveals New Mountains Under the Sea.*¹

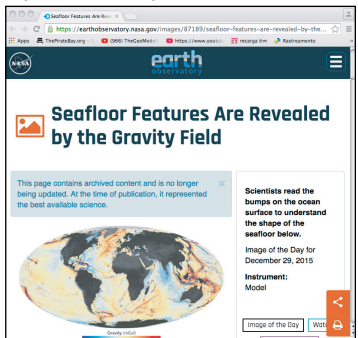


Gravity VGG Sandwell Smith

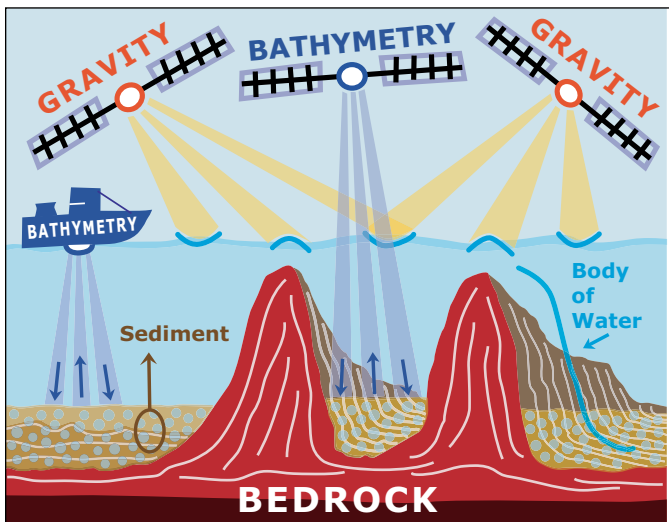
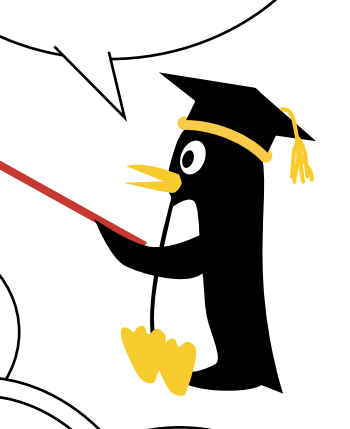


SO THE ACADEMICS
DR. SANDWELL*², DR. SMITH*³
AND THEIR COLLEAGUES
IMPROVE THE GRAVITY MAP!
GIVING US A LOT MORE
DETAIL IN TO THE DEEP
OCEAN FLOOR!

Seafloor features Are Revealed by the Gravity Field.*⁴



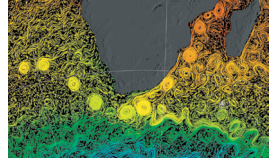
SHOWING MORE DETAILS OF THE
BEDROCK UNDER THE SEDIMENT! REVEALING
AN INCREDIBLE INTERCONTINENTAL PATTERN
OF MOUNTAIN RANGES!



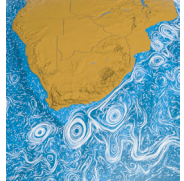
Bathymetry (Sonar) focuses on the topography of the Ocean Floor.

Gravity explores the subsurface structure based on gravitational variations.

Oceanic currents work the body of water, and the gravity mapping measure with precision the surface, since the water is incompressible,

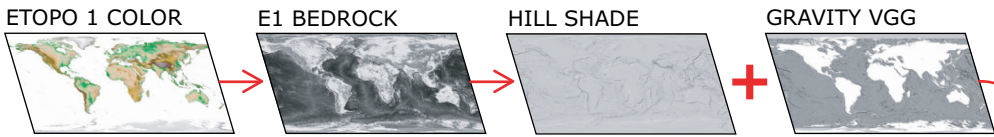


Sample: South Africa Oceanic Currents.



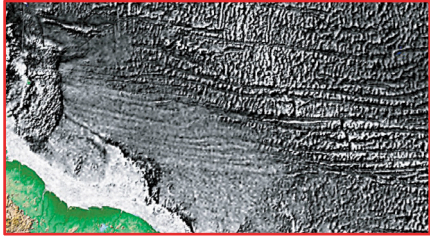
tiny bumps on the sea surface are compared and combined with previous gravity measurements.

WITH THE NEW
GRAVITY MAP!
OUR COMPOSITE
NOW SHOW THAT
THE BEDROCK
CONTINUES ALL
THE WAY TO THE
CONTINENTAL
EDGES!

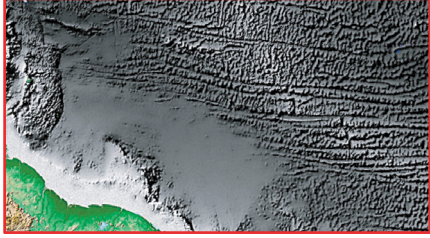


NOW
WE CAN SEE MORE
OF THIS PATTERN!
ALL OVER THE DEEP
OCEAN FLOOR!

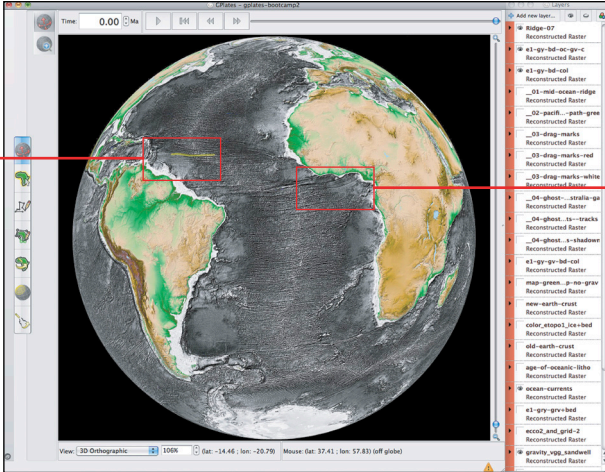
AFTER GRAVITY OVERLAY



BEFORE GRAVITY OVERLAY

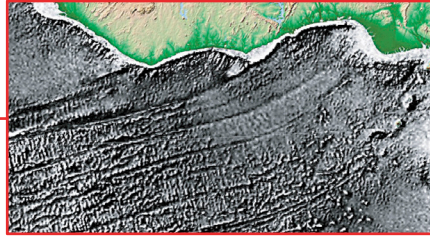


ETOPO 1 COLOR + BEDROCK + HILL SHADE + GRAVITY

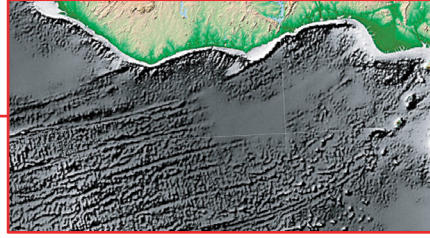


WITH GRAVITY MAP OVERLAY

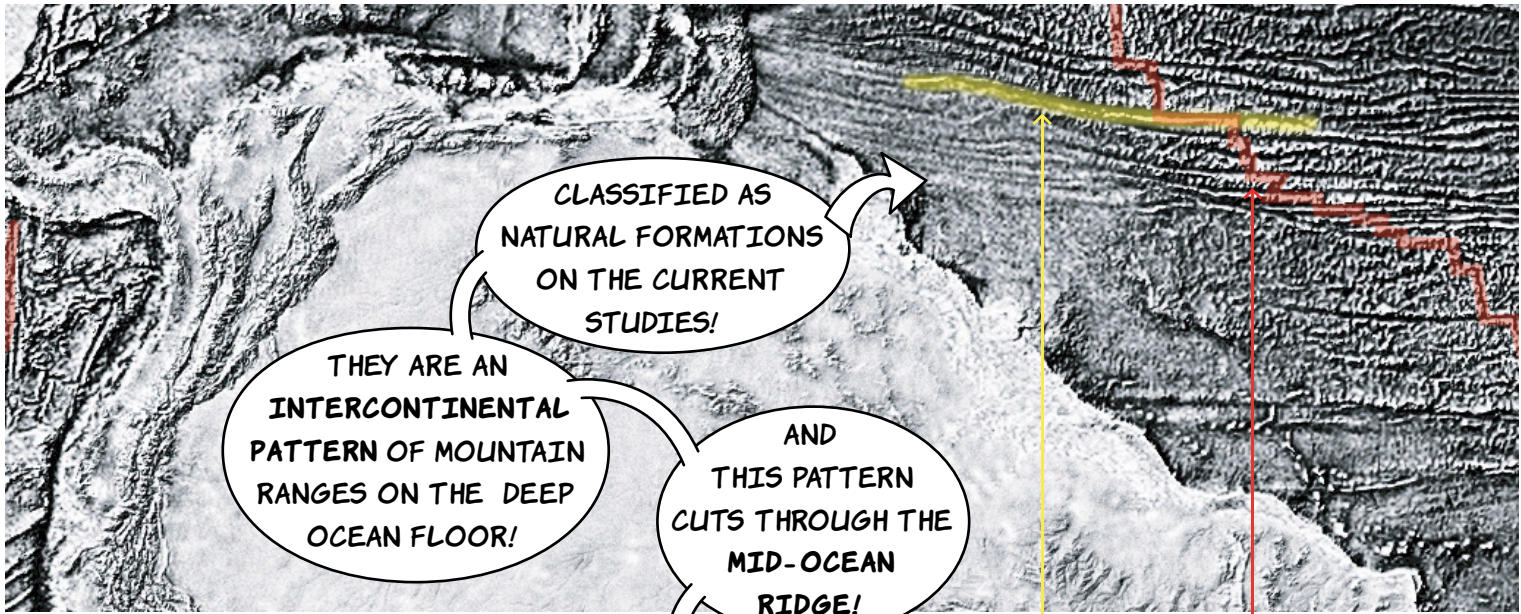
AFTER GRAVITY OVERLAY



BEFORE GRAVITY OVERLAY



*1 - Improved Gravity Map Reveals New Mountains Under the Sea. <http://www.poikesttheory.com.br/bco/n-improved-gravity.html>
 *2 - Dr. David Sandwell of the Scripps Institution of Oceanography. <http://www.poikesttheory.com.br/bco/dr-sandwell.html>
 *3 - Dr. Walter Smith of the National Oceanic and Atmospheric Administration. <http://www.poikesttheory.com.br/bco/dr-smith.html>
 *4 - Seafloor features Are Revealed by the Gravity Field. <http://www.poikesttheory.com.br/bco/n-seafloor-features.html>



CLASSIFIED AS NATURAL FORMATIONS ON THE CURRENT STUDIES!

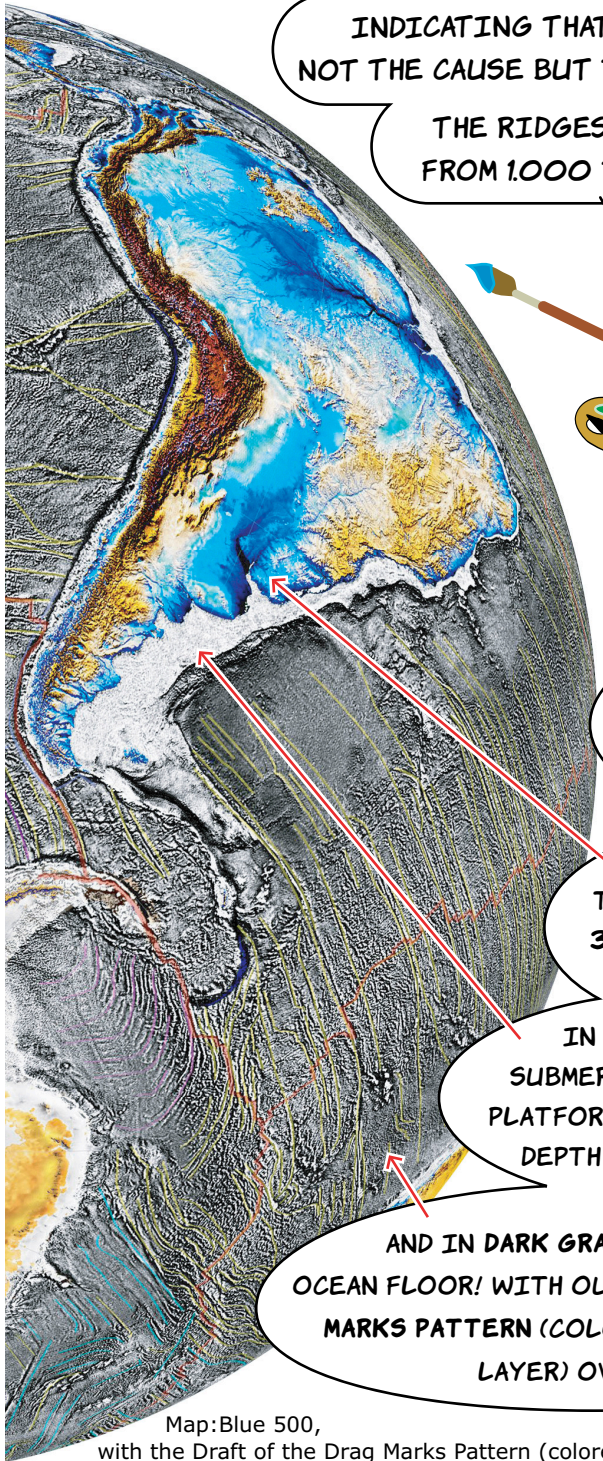
THEY ARE AN INTERCONTINENTAL PATTERN OF MOUNTAIN RANGES ON THE DEEP OCEAN FLOOR!

AND THIS PATTERN CUTS THROUGH THE MID-OCEAN RIDGE!

Map: E1 Grayscale Hillshade + Bedrock + Gravity overlay

Ridge 07

Mid-ocean Ridge



INDICATING THAT THE MID-OCEAN RIDGE IS NOT THE CAUSE BUT THE RESULT OF THIS PATTERN!

THE RIDGES ON THIS PATTERN MIGHT VARY FROM 1.000 TO 5.000 METERS IN HEIGHT!



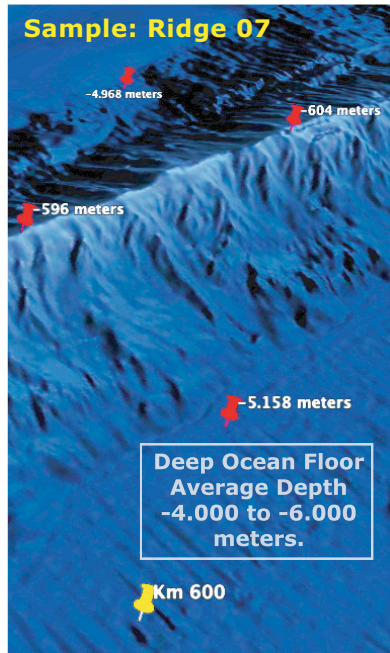
SO WE COLORIZE OUR BLUE MAP TO BETTER SHOW OUR THEORY!

AND WE CALL IT THE BLUE 300, OCEAN GRAVITY OVERLAY AND BLUE 500, FULL GRAVITY OVERLAY!

WE COLOR THEM FROM ZERO TO 300 METERS INLAND WITH BLUE!

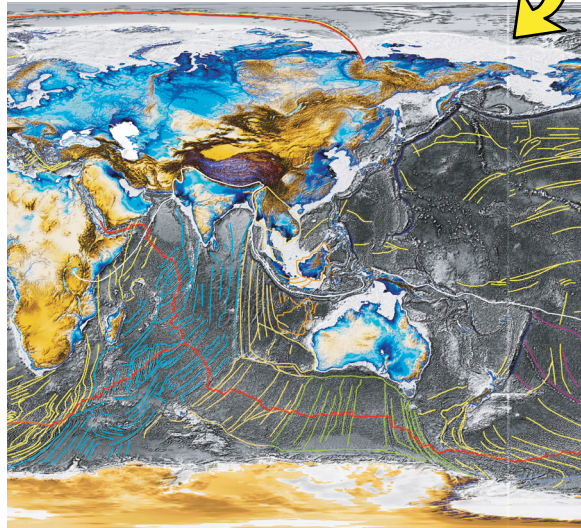
IN WHITE ARE THE SUBMERGED CONTINENTAL PLATFORMS WITH AN AVERAGE DEPTH OF -200 METERS!

AND IN DARK GRAY IS THE DEEP OCEAN FLOOR! WITH OUR DRAFT OF THE DRAG MARKS PATTERN (COLORED TRANSPARENT LAYER) OVERLAY!



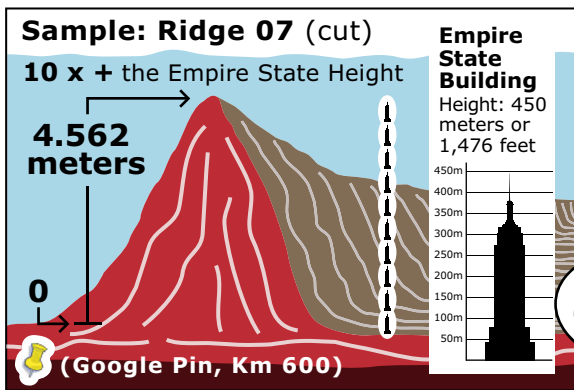
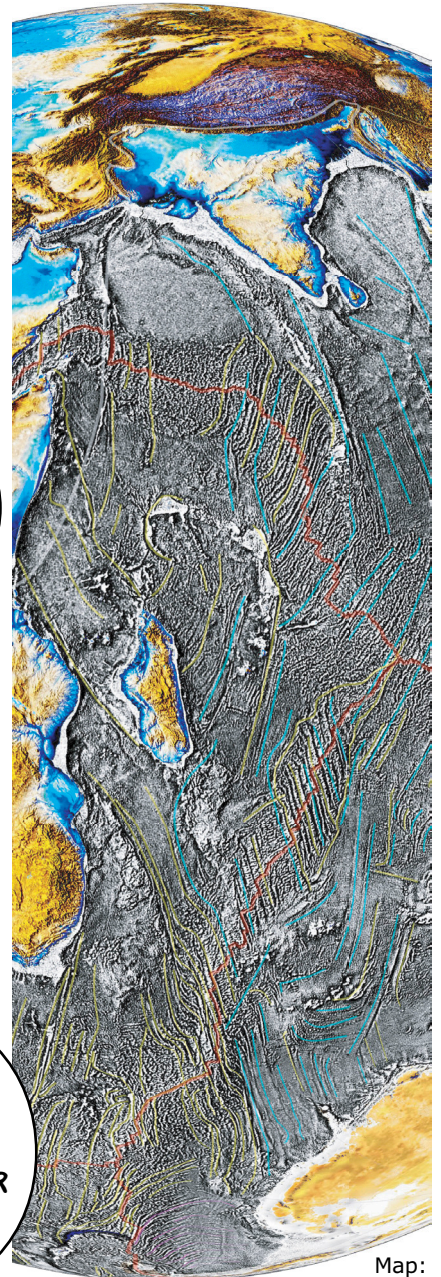
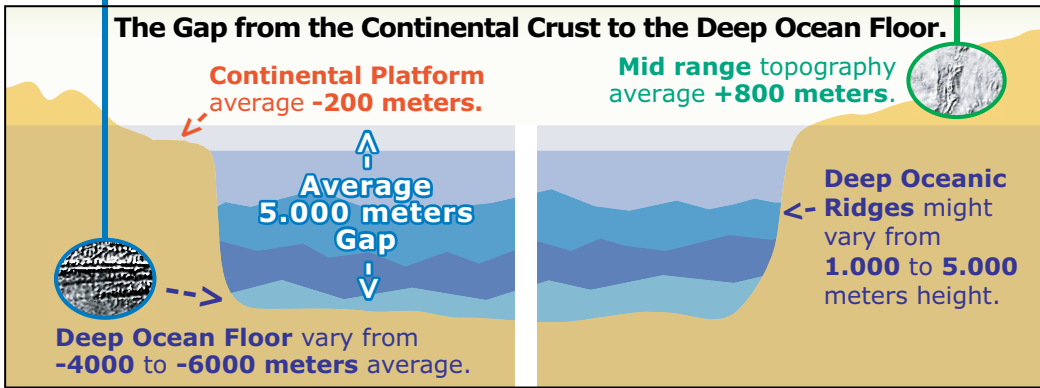
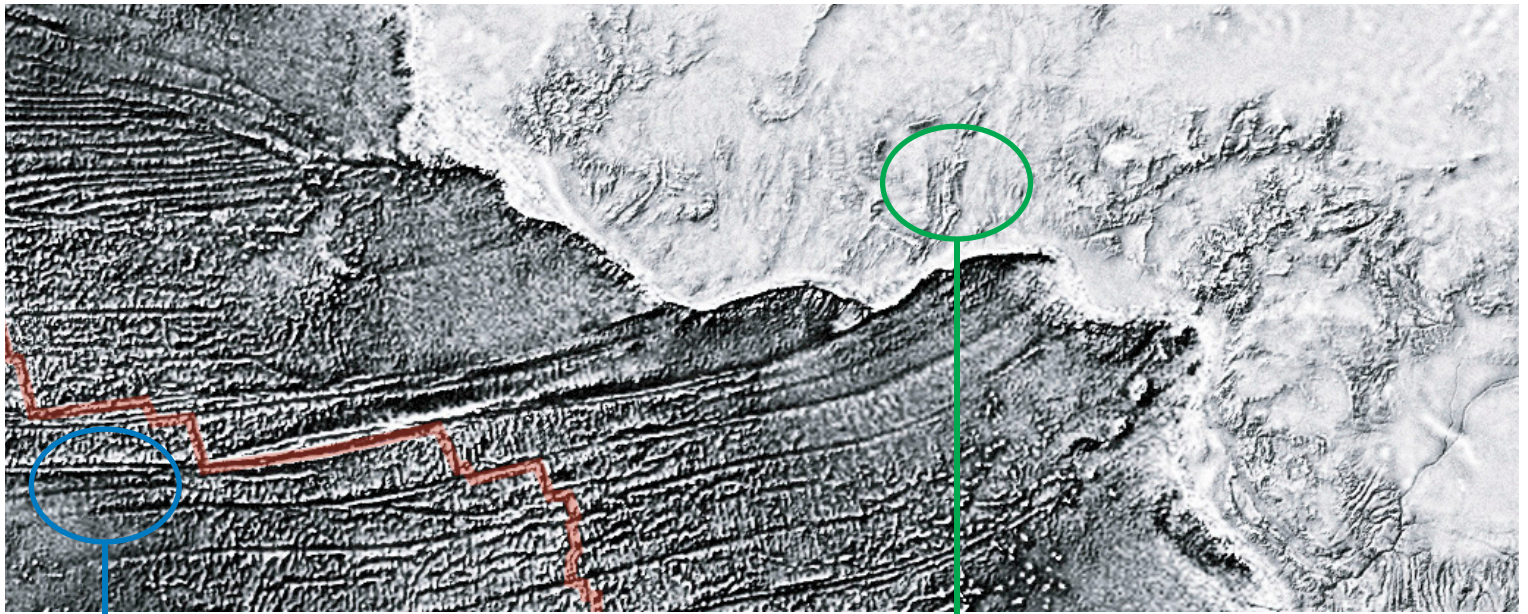
You can Download*1 our GPlates Project: **bco3-gp-proj-1.zip*1** with all the Maps and Layers of this GB.

Map: Blue 300, with Drag Marks Pattern Color Draft Layer Overlay.



Map: Blue 500, with the Draft of the Drag Marks Pattern (colored, transparent layer) Overlay.

*1 - GPlates Boot Camp Project # 3 (maps and layers) http://www.pikestheory.com.br/_bootcamp.html#bco3-gp-proj-1



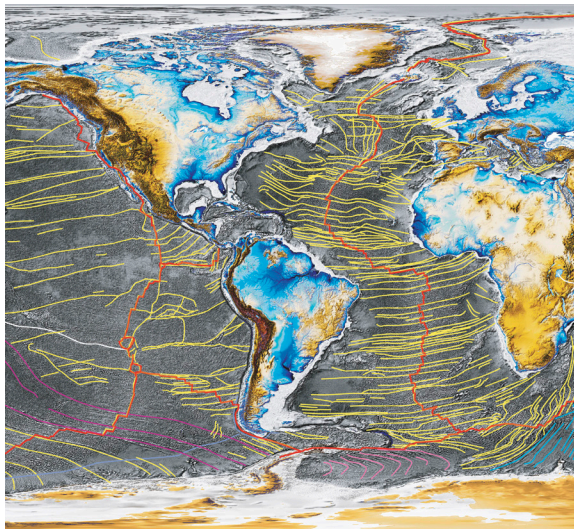
WE ARE GOING TO SHOW HOW THE STUDY OF THIS PATTERN ALLOW US TO BACKTRACK THE CONTINENTAL DRIFT!

SO LET'S INSPECT IT!



TO HELP US GRANDPA POIKE DRAW THIS DRAFT OF THE DRAG MARKS PATTERN! IN COLOR AND A VERSION IN A SEE THROUGH LAYER!

AND YOU CAN VIEW OR DOWNLOAD OUR BLUE MAP*2 ONLINE WITH OR WITHOUT THE DRAG MARKS PATTERN LAYER AT OUR EARTH MAPS WEB PAGE!*2



THIS APPROACH WILL UNLEASH A NEW PERSPECTIVE ON THE HISTORY OF THE PLANET! AND THERE IS MUCH MORE... TO BE CONTINUED...

Map: Blue 500 w/ Transparent Color Drag Marks Pattern Layer Overlay

*2 - View or download the Blue Map 300/500 http://www.poikestheory.com.br/_earth-maps.html#blue-map-300-500