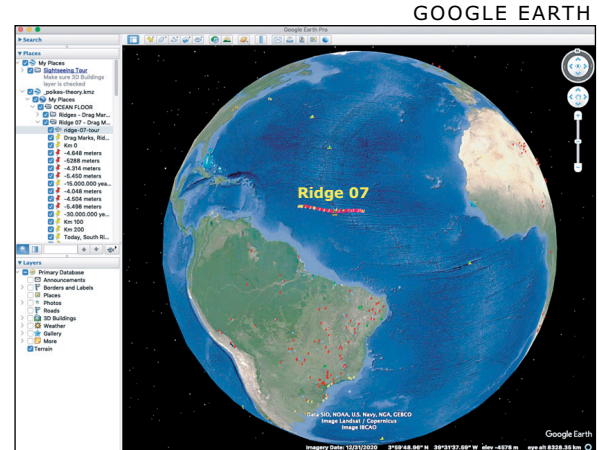
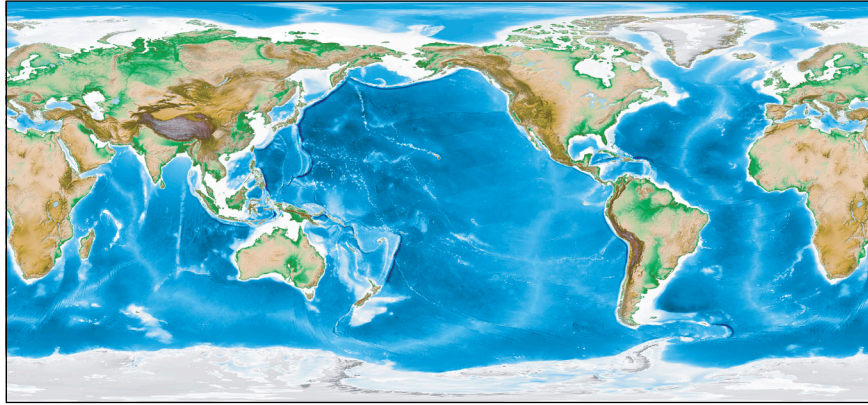


Poike's Theory presents:

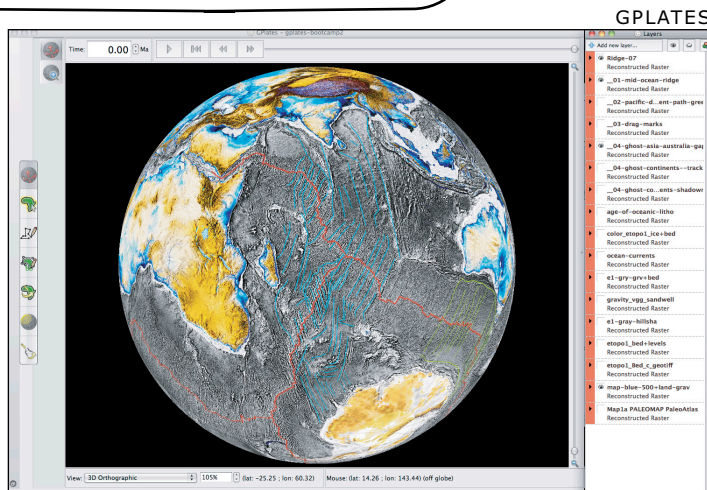
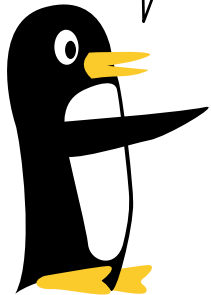
Available in  (en-us) and  (pt-br)

BOOT CAMP #3

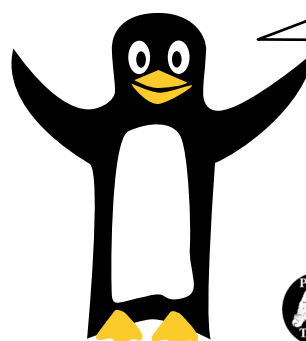
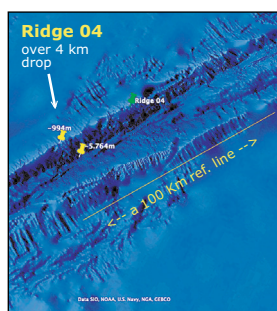
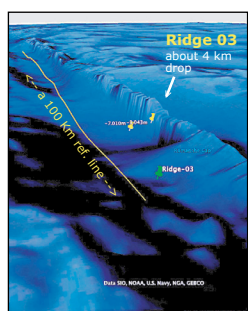
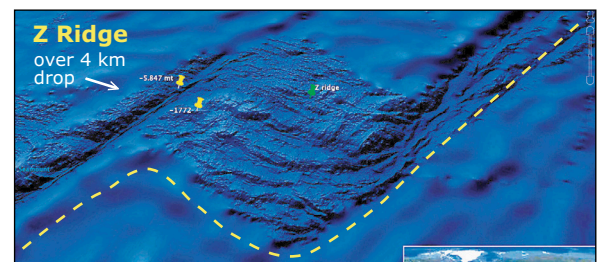
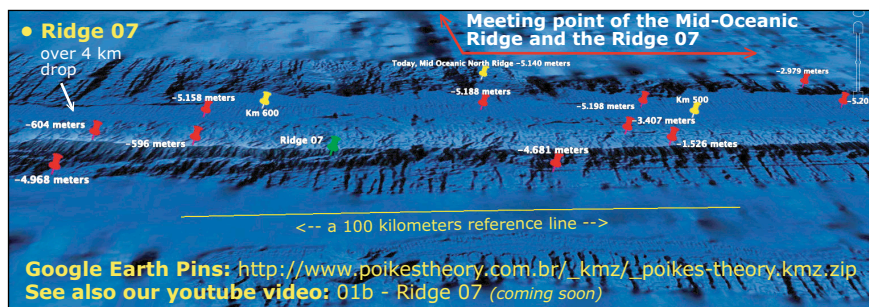
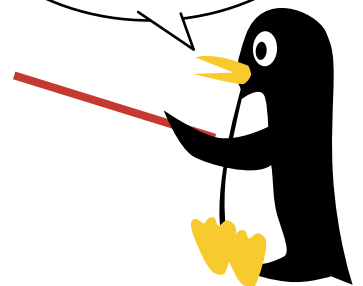
DISCOVER THE DRAG MARKS PATTERN ON THE DEEP OCEAN FLOOR!



HI, MY NAME IS LILY AND I'M GOING TO SHOW YOU HOW YOU CAN DISCOVER THE **DRAG MARKS PATTERN ON THE DEEP OCEAN FLOOR!**



WITH SIMPLE AND FREE TOOLS LIKE **GOOGLE EARTH** AND **GPLATES**, YOU CAN LOAD **NOAA*1** MAPS AND **POIKE'S** MAPS!



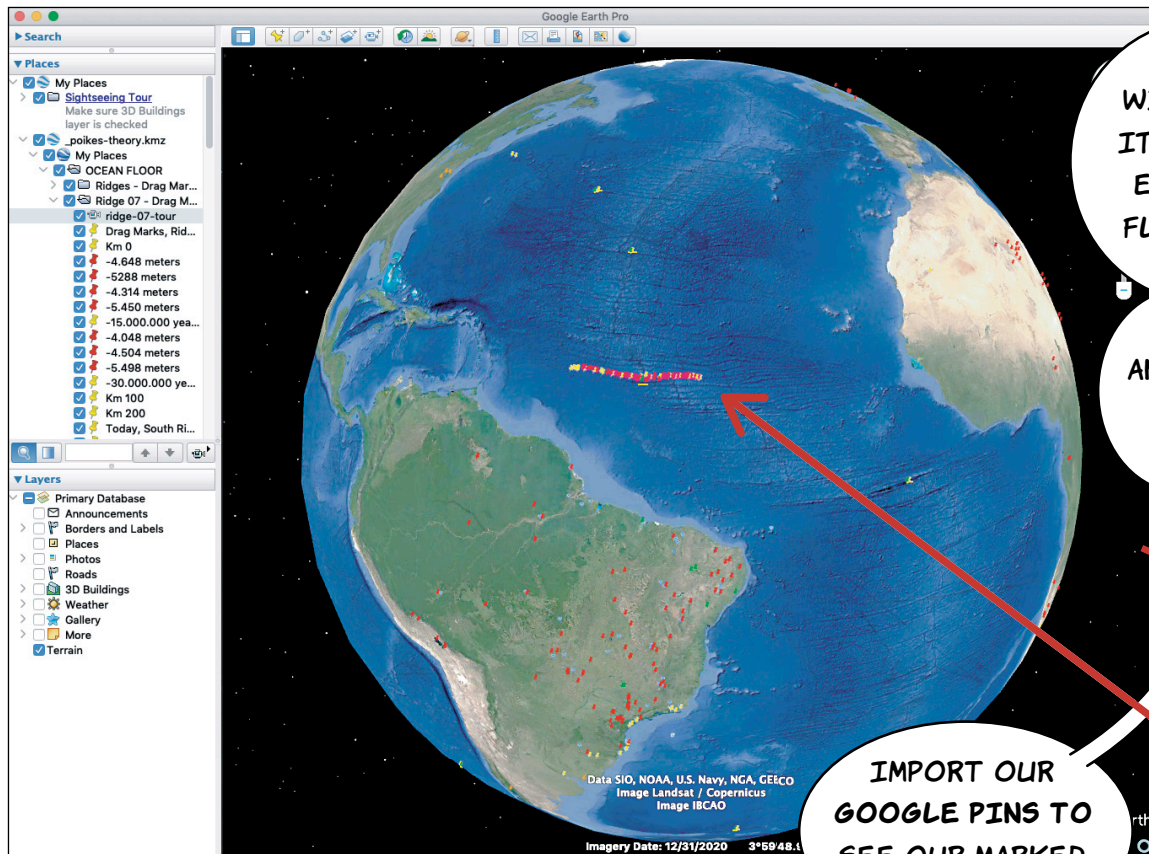
COME WITH US TO EXPLORE THE CHAINS OF MOUNTAINS IN THIS INCREDIBLE PATTERN OF THE DEEP OCEAN FLOOR!

in the PDF version, the text with **ASTERISK *** will have a **Hyperlink** to the **Internet** at the footer.

www.poikestheory.com.br



*1 We work the maps downloaded from NOAA (National Oceanic and Atmospheric Administration). <http://www.noaa.gov>



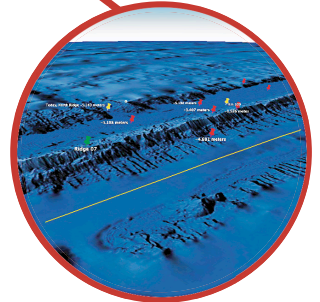
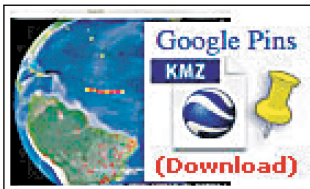
WE CAN START WITH GOOGLE EARTH! IT IS GREAT TOOL TO EXPLORE THE OCEAN FLOOR! HERE IS SOME TIPS!

JUST DOWNLOAD AND INSTALL GOOGLE EARTH TO FOLLOW WITH US!



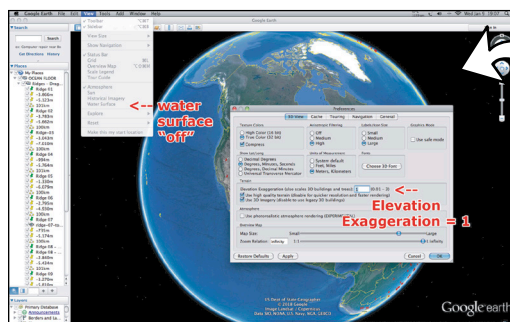
IMPORT OUR GOOGLE PINS TO SEE OUR MARKED RIDGES!

BY DOWNLOADING THE **_poikes-theory.kmz.zip***1 FILE! THEN UNZIP IT AND OPEN WITH YOUR **GOOGLE EARTH!**



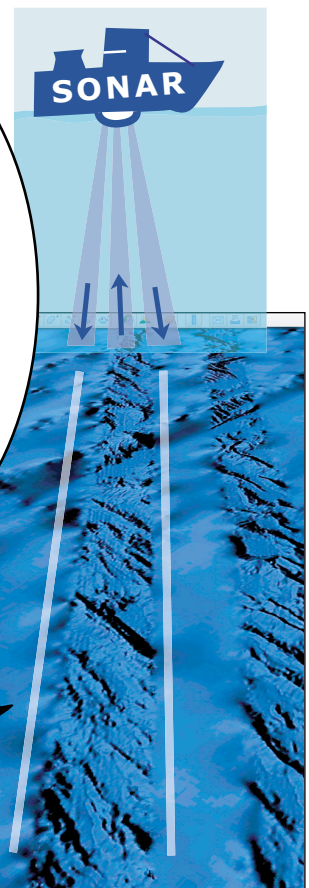
RIDGE 07 PINS

Check our **Boot Camp Online Web Site***2 for videos, links and tutorials on Google Earth under **BCO Resources / Google Earth** tab.



ALSO YOU MAY NEED TO CHECK YOUR **GOOGLE EARTH SETTINGS**!*3 TO SEE THE RIDGES AS WE DO!

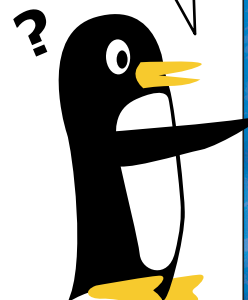
A **CURIOSITY!** THESE RENDERED RANDOM TRACKS ACROSS THE OCEAN FLOOR ARE MADE BY BOATS! MAPPING THE OCEAN FLOOR WITH **SONAR EQUIPMENT!** (BATHYMETRY), THAT'S WHY THEY LOOK SO SHARP!



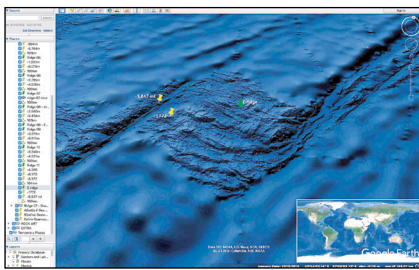
There is only some **rendered** parts of the ocean floor, but most of it still **blurred, not rendered!** Because is difficult and time consuming to get data from de Deep Ocean Floor,



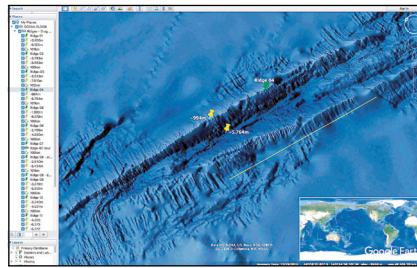
RIDGE 04, 4.7 Km drop.



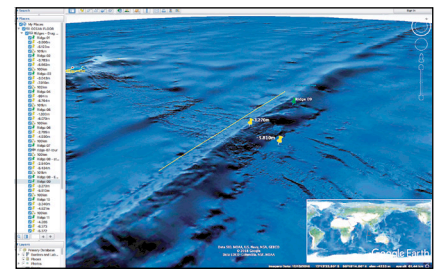
*1 - KMZ file for Google Earth, direct link to download: http://www.poikestheory.com.br/_kmz/_poikes-theory.kmz.zip
 *2 - Boot Camp Online Web Site. (Publications and Resources) Web Site: <http://www.bootcamp.poikestheory.com.br>
 *3 - Google Earth Settings: (our settings) <http://www.poikestheory.com.br/bco/ge-settings.html>



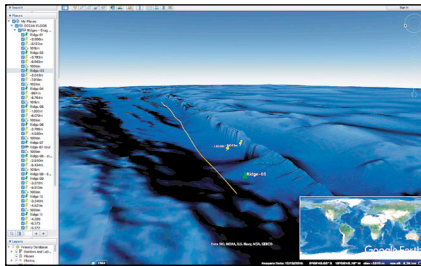
RIDGE Z, 4.1 Km drop.



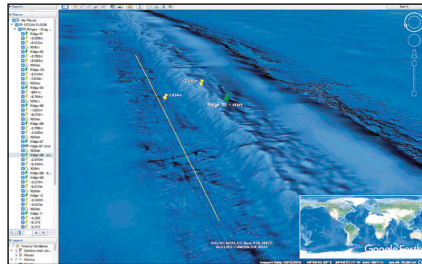
RIDGE 04, 4.7 Km drop.



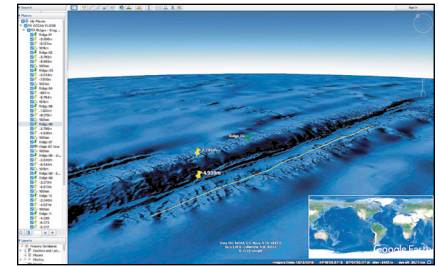
RIDGE 09, 2.5 Km drop.



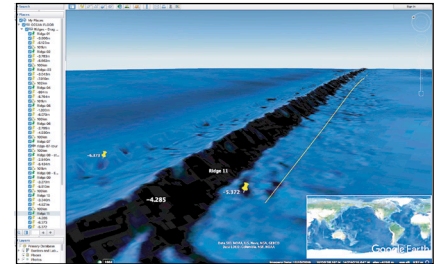
RIDGE 03, 3.9 Km drop.



RIDGE 08, 2.5 Km drop.

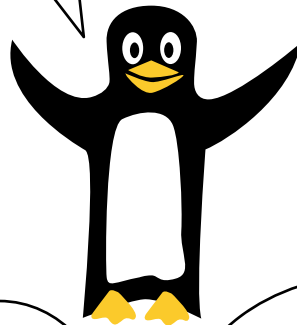


RIDGE 06, 2.1 Km drop.



RIDGE 11, 2 Km drop.

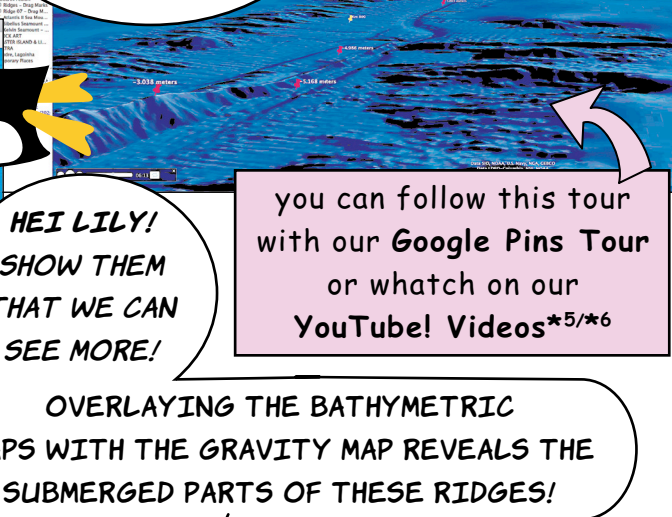
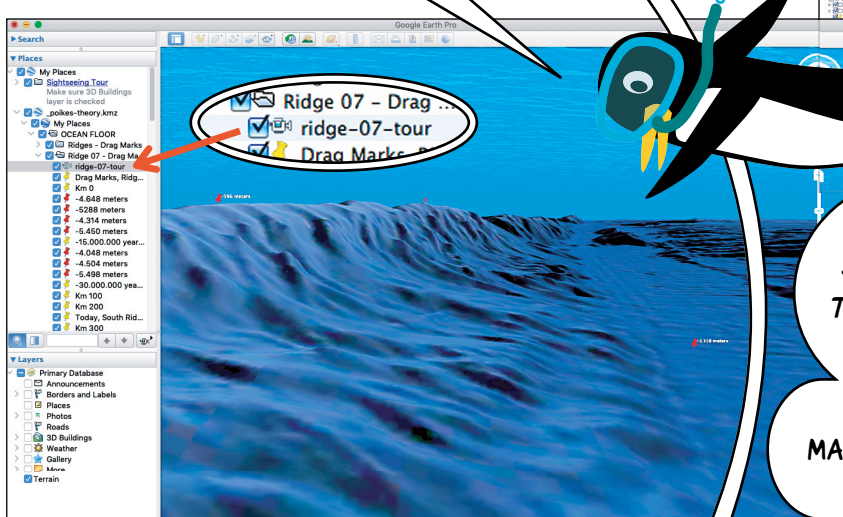
THOSE ARE SOME RIDGES
WE MARK DOWN FOR YOU TO
FOLLOW WITH OUR **GOOGLE EARTH
PINS!** OR TO WATCH IT ON YOU
TUBE: **DEEP OCEAN FLOOR
RIDGES!***⁴



COME DIVE WITH US! WE FOLLOWED
RIDGE 07 FOR A 1000 KM ON A TOUR!
PLACING A **GOOGLE PIN** FOR EVERY 100
METERS AND MARKING ITS HIGHS AND
LOWS ALONG THE WAY!

WILE
IT CROSS THE MID
OCEAN RIDGE! IN
TWO DISTINCTIVE
PLACES! NORTH AND
SOUTH!

AND SEE IT
SINKING INTO THE
SEDIMENT NEAR THE
**CONTINENTAL
MARGIN!**

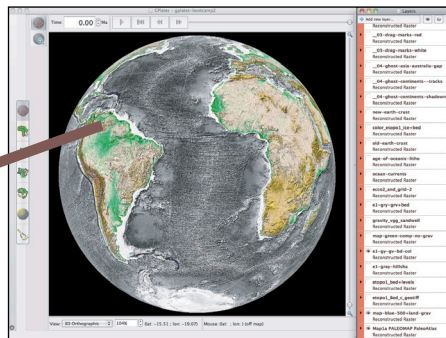


HEI LILY!
SHOW THEM
THAT WE CAN
SEE MORE!

you can follow this tour
with our **Google Pins Tour**
or whatch on our
YouTube! Videos*^{5/6}

OVERLAYING THE BATHYMETRIC
MAPS WITH THE GRAVITY MAP REVEALS THE
SUBMERGED PARTS OF THESE RIDGES!

**YES
GRANDPA!**
I WILL SHOW
THEM IN THE
NEXT
PAGES!



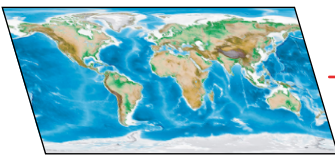
RIDGE 07, 4.4 Km drop.

*4 - You Tube Video Tour: 00a - Deep Ocean Floor Ridges (en-us), <https://youtu.be/TWLxrMioIE8>

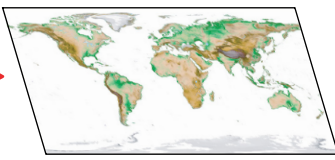
*5 - You Tube Video Tour: Ridge 07 no water, <https://youtu.be/XmAPIFZt8XM>

*6 - You Tube Video Tour: Ridge 07 with water, <https://youtu.be/tKJ5uv2igAI>

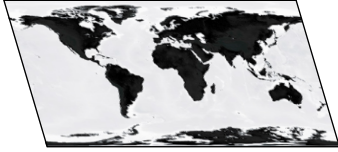
ETOPO 1 COLOR



CONTINENTS ONLY

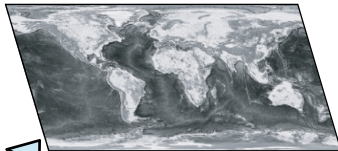


ETOPO 1 BEDROCK



< ORIGINAL

ADJUSTED >

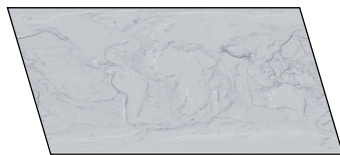


ETOPO 1 BEDROCK

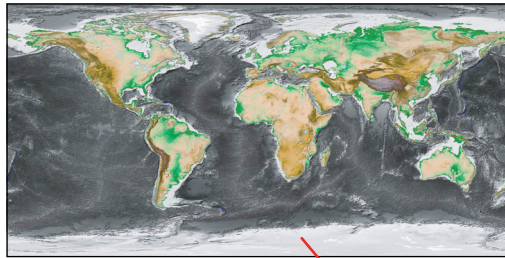
You can see our videos on Etopo1 Bedrock Map being adjusted on How we work our maps*1.

IT TOOK HIM SOME TIME TO FIGURE OUT HOW TO ADJUST THE SHADOWS ON THE ETOPO1 BEDROCK MAP! BUT IT WAS WORTH IT! THIS PROCESS INCREASED THE RIDGES VISUALIZATION!

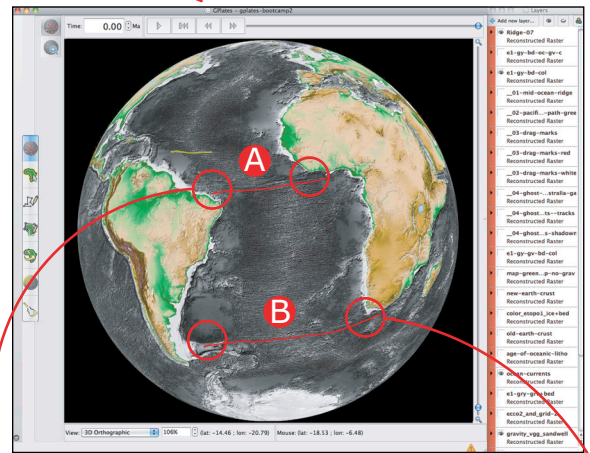
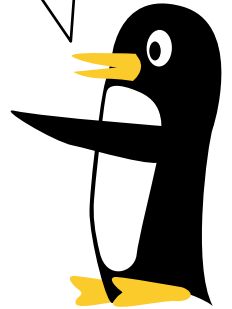
GRAYSCALE HILL SHADE



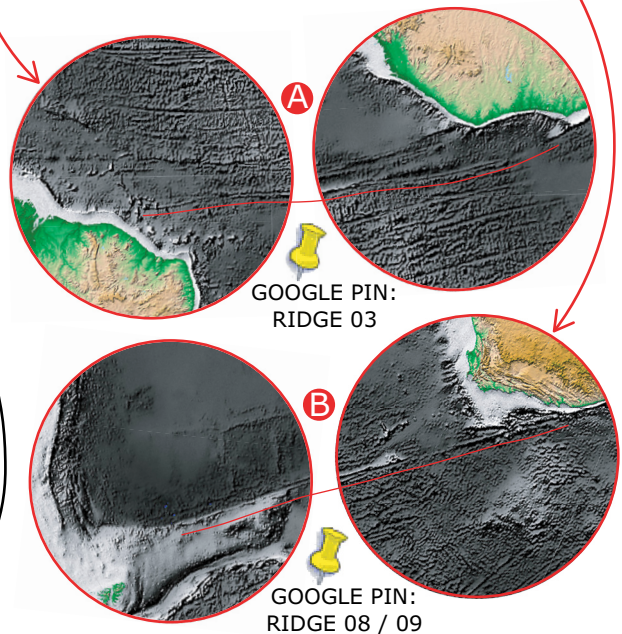
ETOPO 1 COLOR + BEDROCK + HILL SHADE



A LONG TIME AGO! BEFORE I WAS EVEN BORN! GRANDPA POIKE WAS ALREADY WORKING ON THESE MAPS! SINCE THE EARLY 2000S! ADJUSTING AND OVERLAYING THEM! LOOKING FOR A BETTER VIEW OF THE DEEP OCEAN FLOOR!



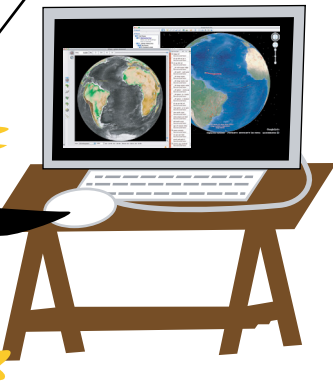
NO GRAVITY MAP OVERLAY



GOOGLE PIN: RIDGE 03

GOOGLE PIN: RIDGE 08 / 09

ON THIS COMPOSITE MAP YOU ALREADY CAN SEE SOME OF MANY INTERCONTINENTAL RIDGES! AND WE HAVE A NICE COLLECTION OF MAPS FOR DOWNLOAD AT OUR WEB PAGE! POIKE'S THEORY, EARTH MAPS*2



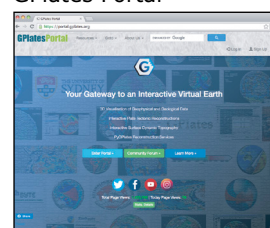
Our Tutorials for GPlates*3

we'll focus on how to use GPlates as a Visual Interface, showing how to load maps and layers into the globe, and play the Paleomap Timeline for visual analysis. GPlates advanced features like python programming won't be covered, for that you can look at Earth Byte Web Site and GPlates Portal.

EarthByte Web Site*3



GPlates Portal*3



GPlates Download*3



*1 - How we work our maps (videos) <http://www.poikestheory.com.br/bco/how-to-maps.html>

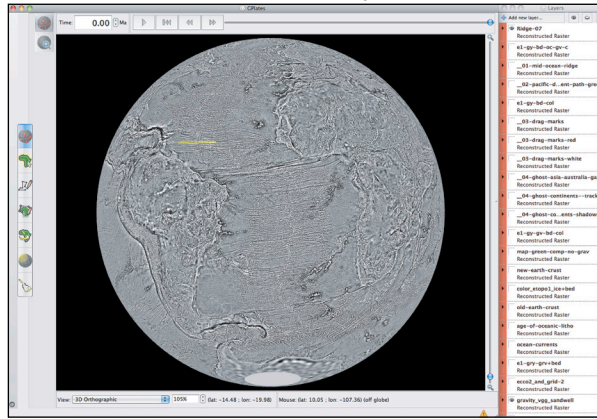
*2 - Poike's Theory Earth Maps (our maps collection) http://www.poikestheory.com.br/_earth-maps.html

*3 - Gplates (links, tutorials and videos) <http://www.poikestheory.com.br/bco/earthbyte-gplates.html>

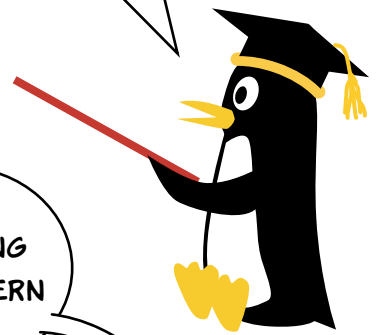


< Improved Gravity Map Reveals New Mountains Under the Sea.*¹

Gravity VGG Sandwell Smith

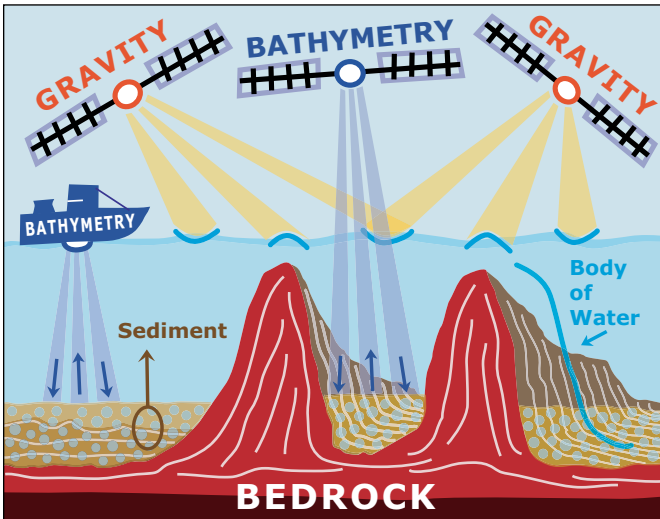
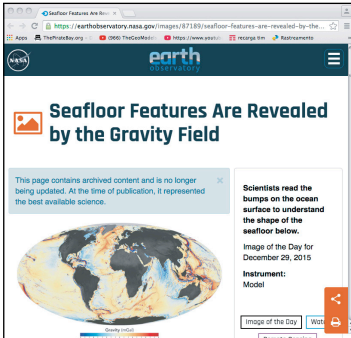


SO THE ACADEMICS
DR. SANDWELL*², DR. SMITH*³
AND THEIR COLLEAGUES
IMPROVE THE GRAVITY MAP!
GIVING US A LOT MORE
DETAIL IN TO THE DEEP
OCEAN FLOOR!



SHOWING MORE DETAILS OF THE
BEDROCK UNDER THE SEDIMENT! REVEALING
AN INCREDIBLE INTERCONTINENTAL PATTERN
OF MOUNTAIN RANGES!

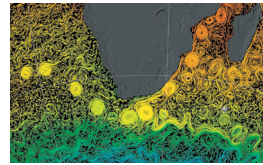
Seafloor features are Revealed
by the Gravity Field.*⁴



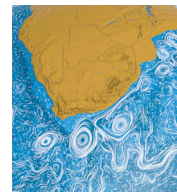
Bathymetry (Sonar) focuses on the
topography of the Ocean Floor.

Gravity explores the subsurface structure
based on gravitational variations.

Oceanic currents work
the body of water, and
the gravity mapping
measure with precision
the surface, since the
water is incompressible,



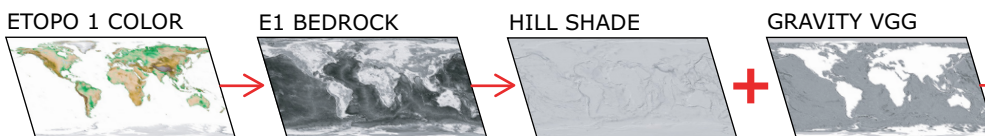
Sample: South Africa
Oceanic Currents.



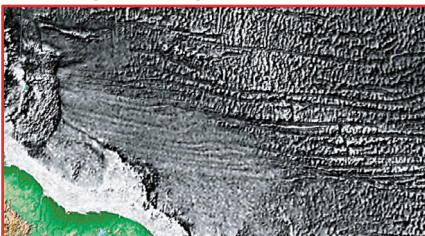
tiny bumps on
the sea surface
are compared
and combined
with previous
gravity
measurements.

WITH THE NEW
GRAVITY MAP!
OUR COMPOSITE
NOW SHOW THAT
THE BEDROCK
CONTINUES ALL
THE WAY TO THE
CONTINENTAL
EDGES!

NOW
WE CAN SEE MORE
OF THIS PATTERN!
ALL OVER THE DEEP
OCEAN FLOOR!



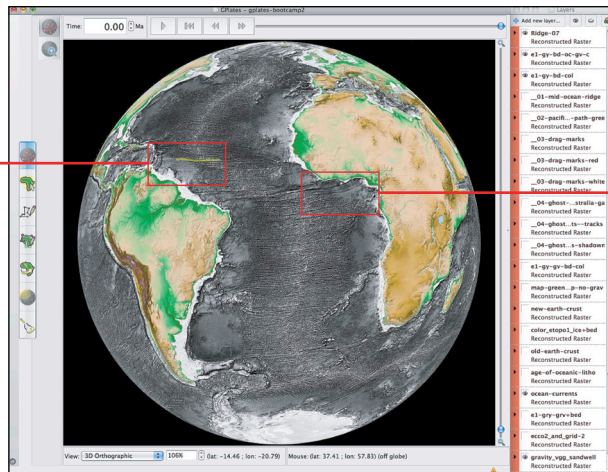
AFTER GRAVITY OVERLAY



BEFORE GRAVITY OVERLAY

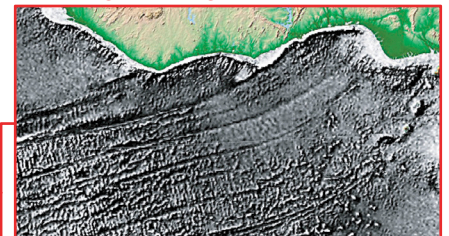


ETOPO 1 COLOR + BEDROCK + HILL SHADE + GRAVITY

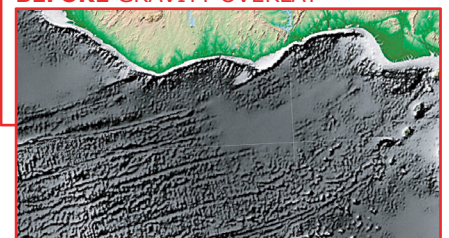


WITH GRAVITY MAP OVERLAY

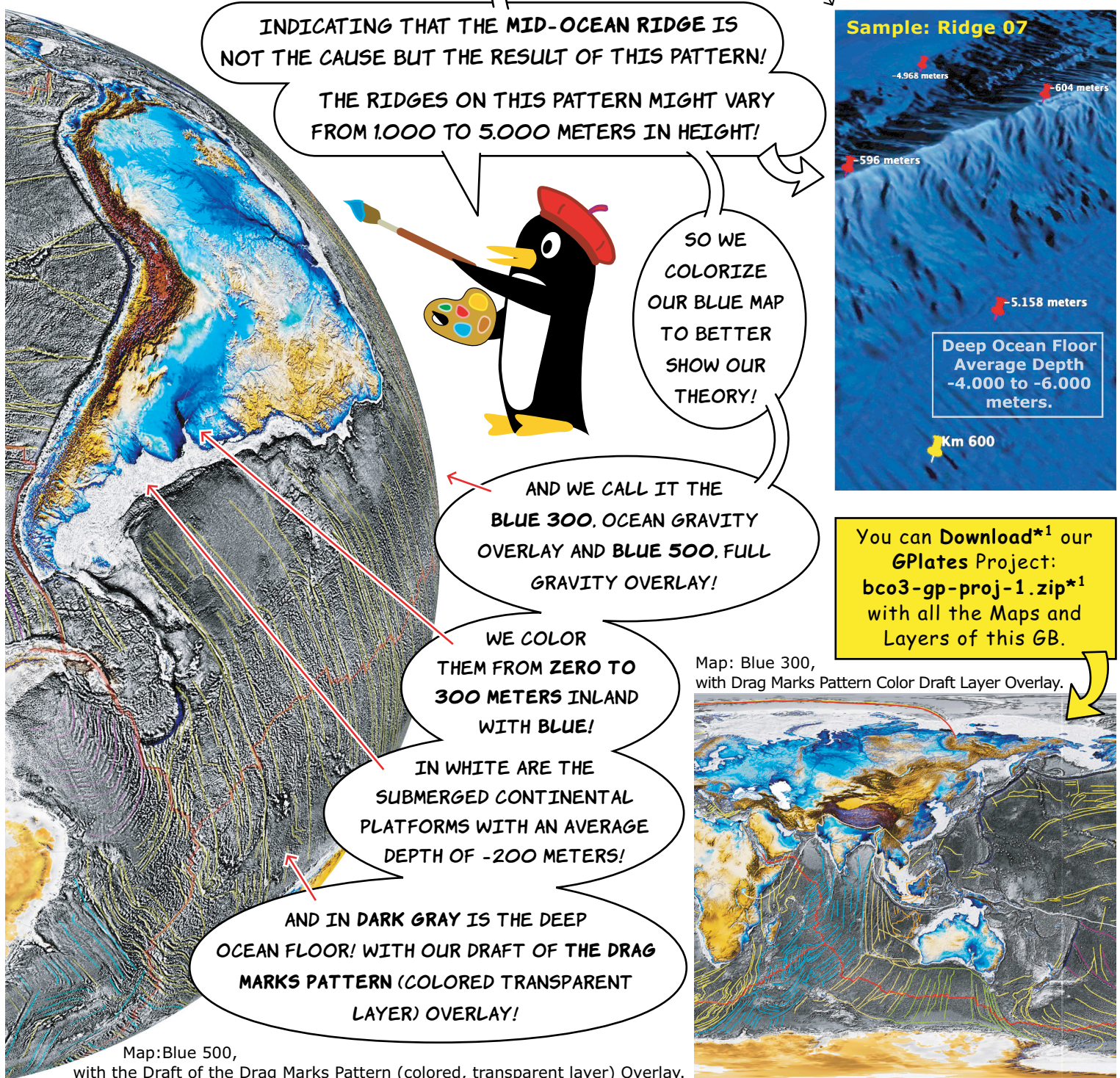
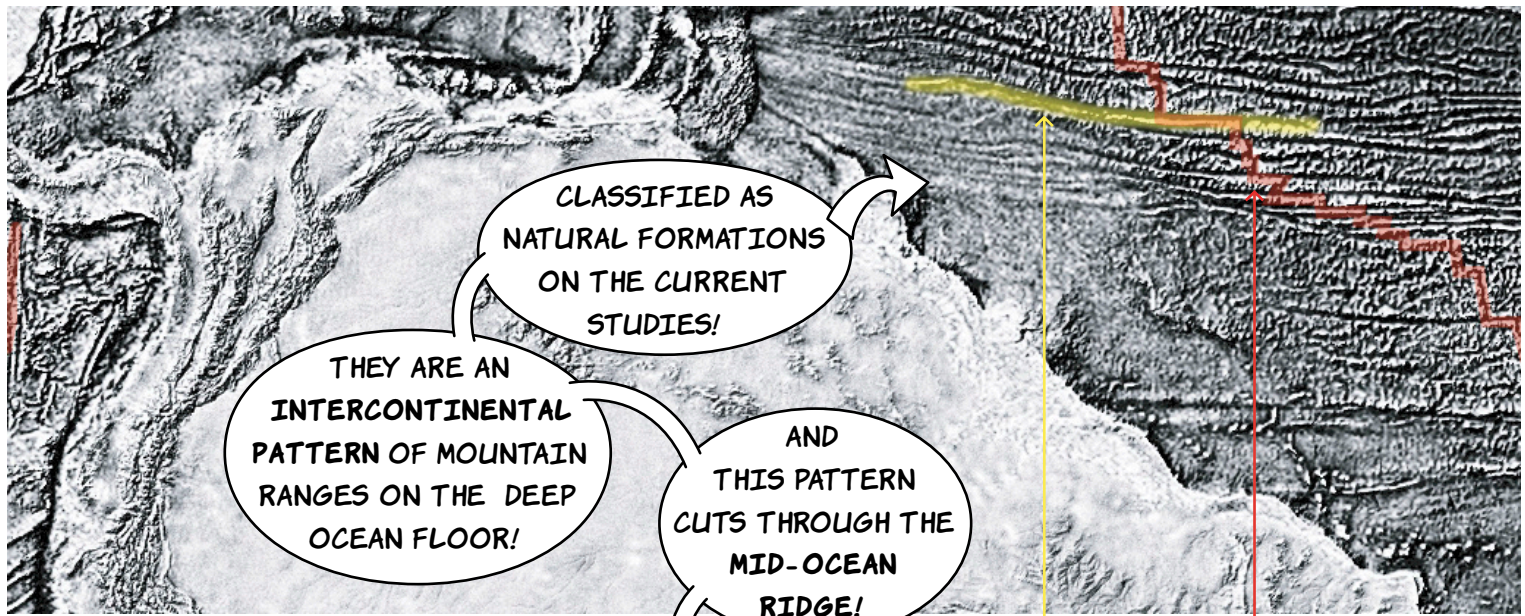
AFTER GRAVITY OVERLAY



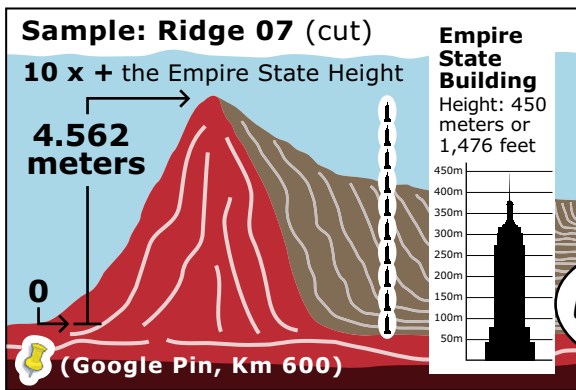
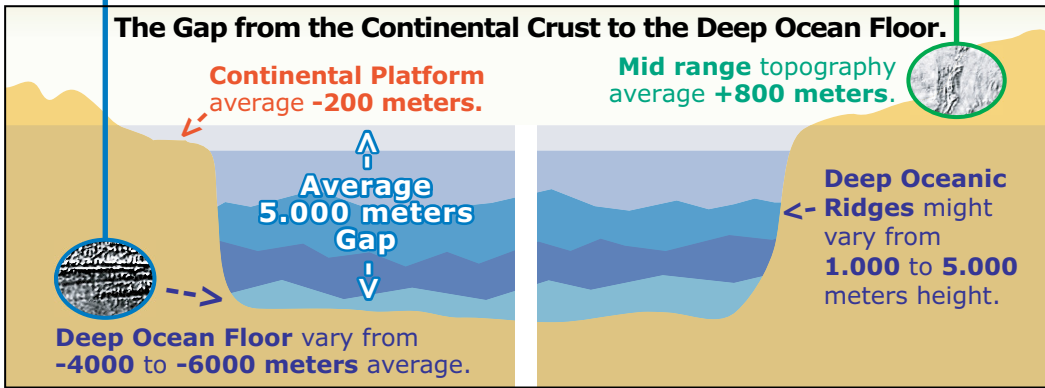
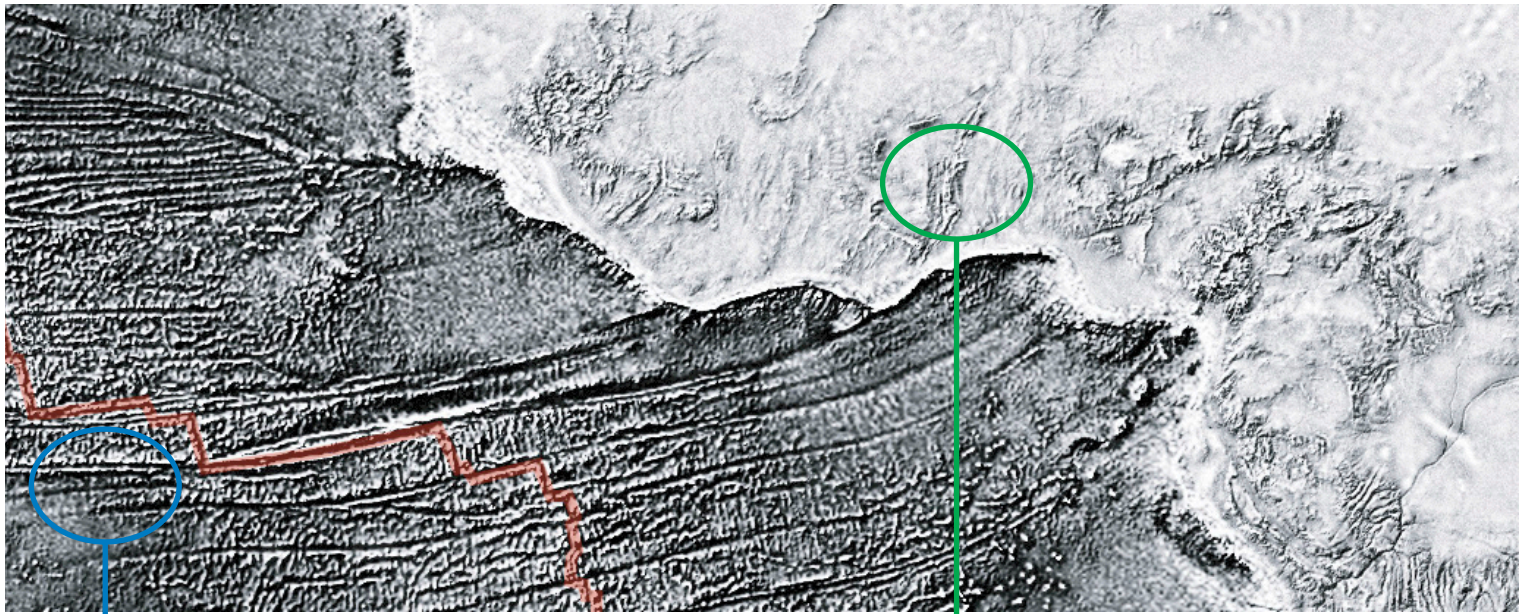
BEFORE GRAVITY OVERLAY



- *¹ - Improved Gravity Map Reveals New Mountains Under the Sea. <http://www.poikestheory.com.br/bco/n-improved-gravity.html>
- *² - Dr. David Sandwell of the Scripps Institution of Oceanography. <http://www.poikestheory.com.br/bco/dr-sandwell.html>
- *³ - Dr. Walter Smith of the National Oceanic and Atmospheric Administration. <http://www.poikestheory.com.br/bco/dr-smith.html>
- *⁴ - Seafloor features Are Revealed by the Gravity Field. <http://www.poikestheory.com.br/bco/n-seafloor-features.html>



You can Download*¹ our GPlates Project: **bco3-gp-proj-1.zip***¹ with all the Maps and Layers of this GB.



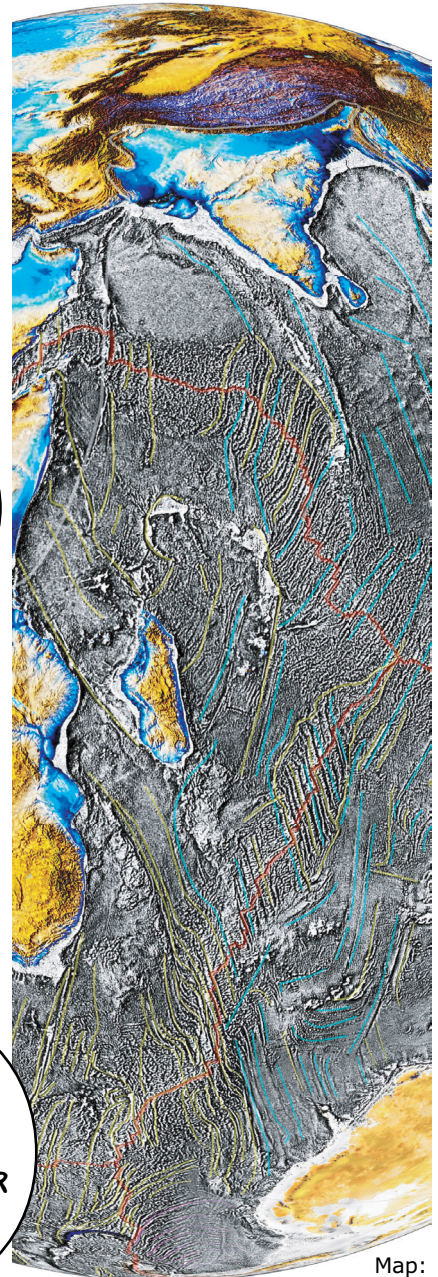
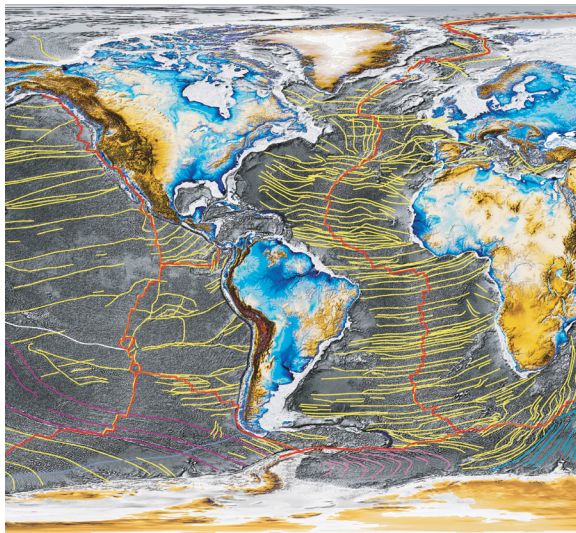
WE ARE GOING TO SHOW HOW THE STUDY OF THIS PATTERN ALLOW US TO BACKTRACK THE CONTINENTAL DRIFT!

SO LET'S INSPECT IT!



AND YOU CAN VIEW OR DOWNLOAD OUR BLUE MAP*2 ONLINE WITH OR WITHOUT THE DRAG MARKS PATTERN LAYER AT OUR EARTH MAPS WEB PAGE!*2

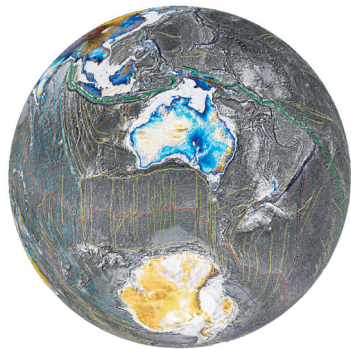
TO HELP US, GRANDPA POIKE DRAW THIS DRAFT OF THE DRAG MARKS PATTERN! IN COLOR AND A VERSION IN A SEE THROUGH LAYER!



Map:
Blue 500
w/ Transparent
Color Drag Marks
Pattern Layer
Overlay

THIS APPROACH WILL UNLEASH A NEW PERSPECTIVE ON THE HISTORY OF THE PLANET! AND THERE IS MUCH MORE... TO BE CONTINUED....

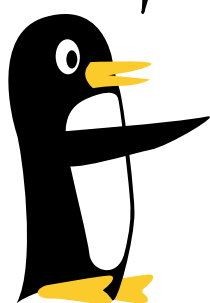
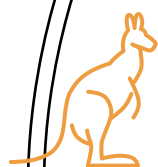
*2 - View or download the Blue Map 300/500 http://www.poikestheory.com.br/_earth-maps.html#blue-map-300-500



STARTING WITH
AUSTRALIA AND
ANTARCTICA!

YOU
CAN SEE HOW
AUSTRALIA GOES UP
NORTH! CRASHING IN
TO THIS THICK GREEN
LINE THAT WE REFER AS
THE RESIDUE OF THE
PACIFIC DROP
PATHWAY!

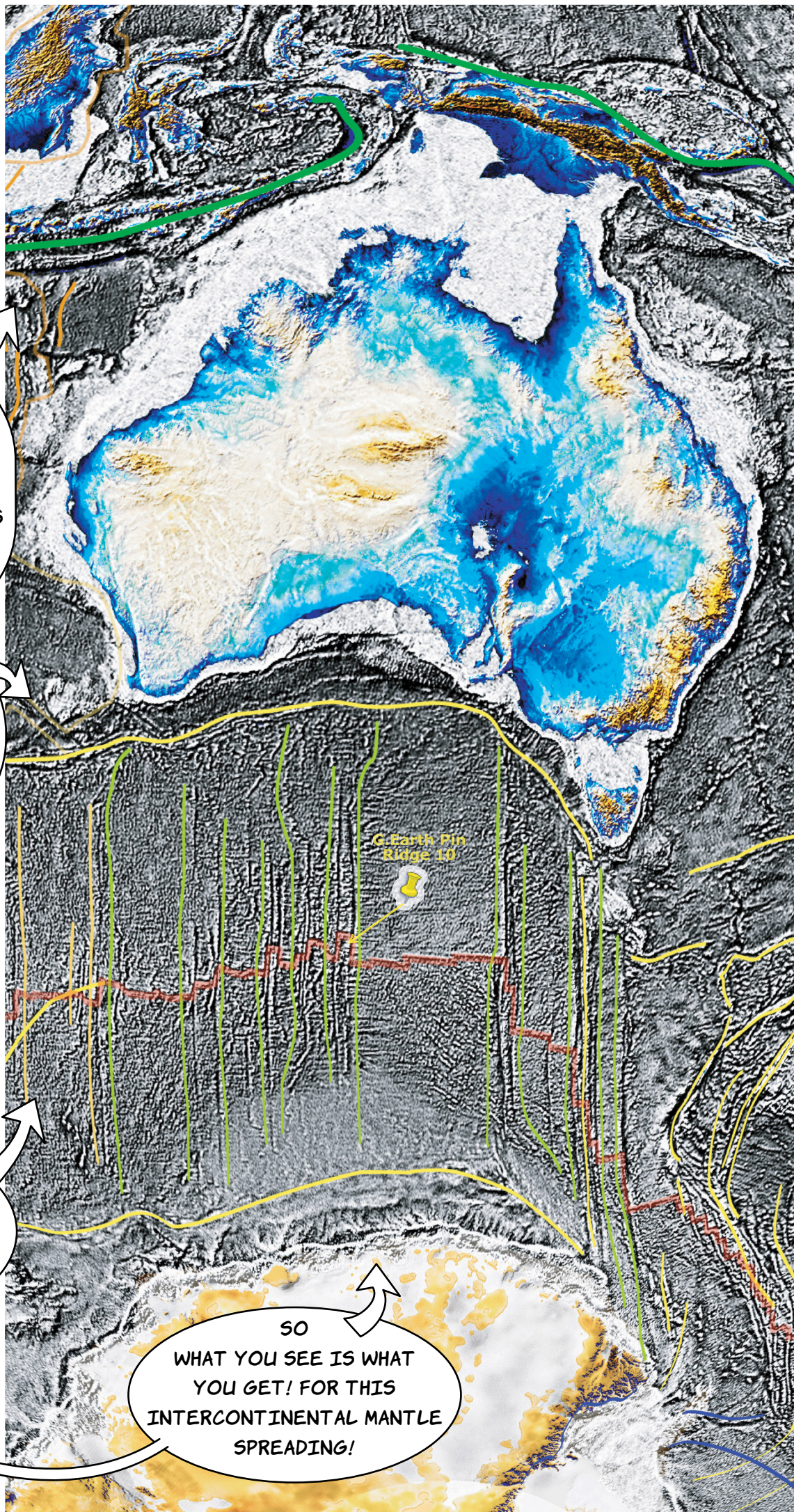
AND
THE LIGHTER
GREEN LINES SKETCH
HIGHLIGHTS THE DRAG
MARKS PATTERN OF
THIS CONTINENTAL
DRIFT!

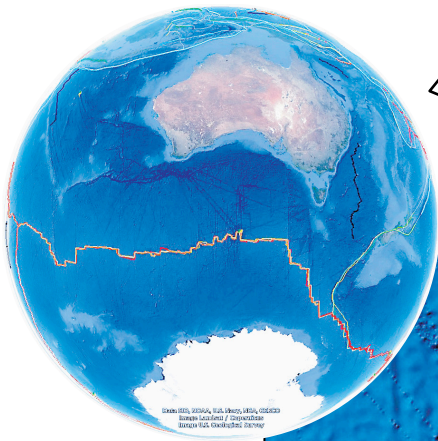


HERE
AT THE CENTER IN
RED! THE MID OCEAN
RIDGE BEING CROSSED
BY THIS PATTERN!

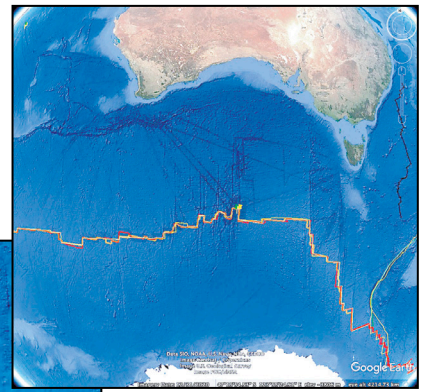
AND
THERE IS NO
SUBDUCTION! THE
MARGINS BETWEEN
ANTARCTICA AND
AUSTRALIA ARE
PASSIVE!

SO
WHAT YOU SEE IS WHAT
YOU GET! FOR THIS
INTERCONTINENTAL MANTLE
SPREADING!



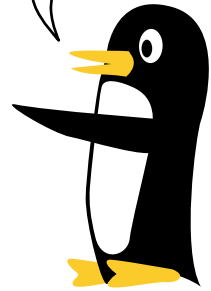


ON GOOGLE EARTH WE
USE THE KML FILE: PLATE
BOUNDARIES*1 FROM EARTHREF.ORG!
DOWNLOAD AND OPEN THE KML*1
FILE TO SEE THE MID OCEAN
RIDGE LAYER !

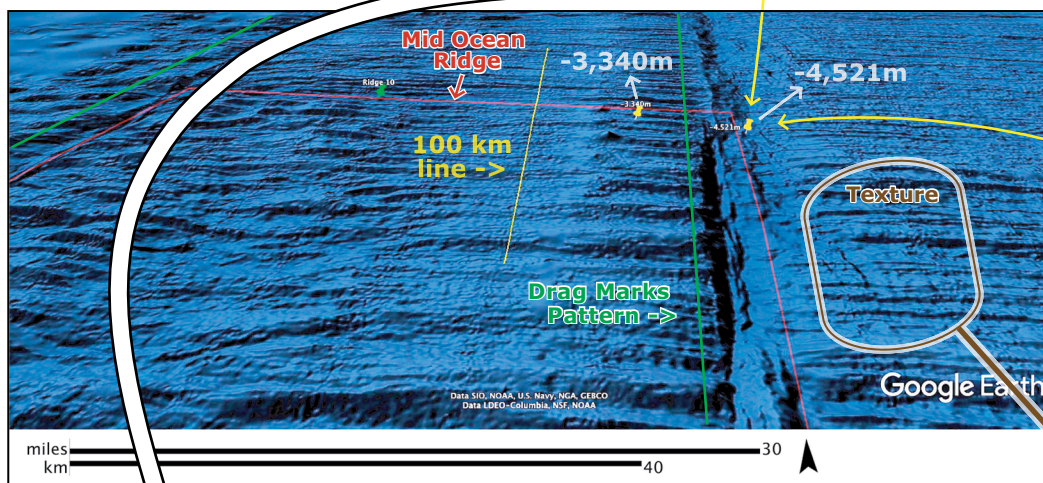


WITH THE "SPREADING RIDGES"
LAYER ON! YOU CAN SEE THE MID
OCEANIC RIDGE IN RED!

Note: The
Green line
Highlight the
direction of
The Drag
Marks Pattern
on the Deep
Ocean Floor!



AND YOU CAN SEE
HOW THE DRAG MARKS
PATTERN CROSS FREELY
THROUGHT THE THE MID
OCEANIC RIDGE! WE
HIGHLIGHTED IT IN
GREEN!



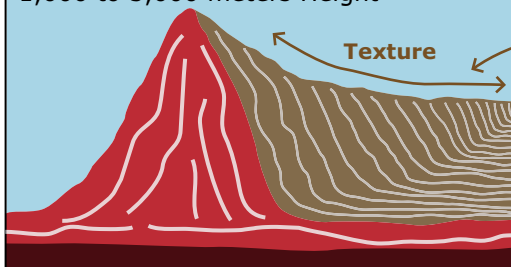
AND THERE IS THE
TEXTURE THAT GOES
ALONG THIS SPREADING
OF THE MANTLE!

AND THE DRAG MARKS PATTERN
VARY FROM POSITIVE (MOUNTAIN
RANGES) TO NEGATIVE (TRENCHES)

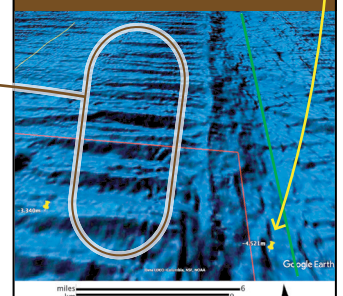
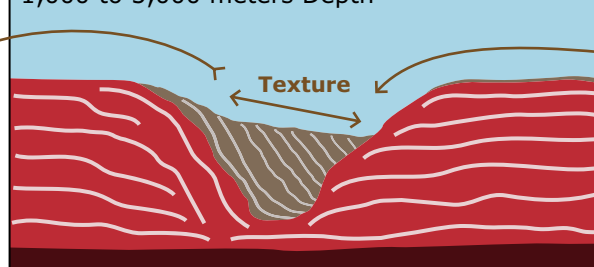
MEASURING FROM
1,000 TO 5,000 METERS
IN HEIGHT OR DEPTH!

TEXTURE is how we
call the ripples on the
terrain that vary
between **100 to 500
meters** up or down on
the terrain.

Positive Pattern (Mountain Ranges)
1,000 to 5,000 meters Height



Negative Pattern (Trenches)
1,000 to 5,000 meters Depth



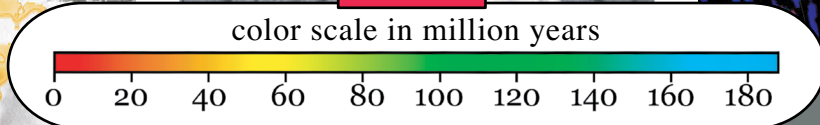
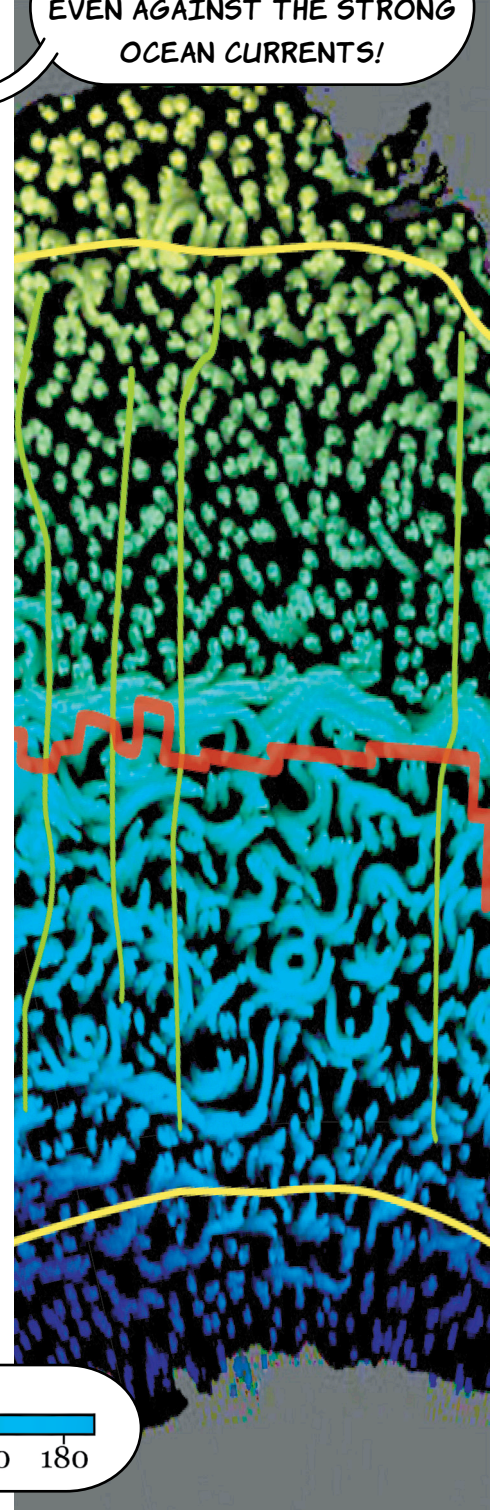
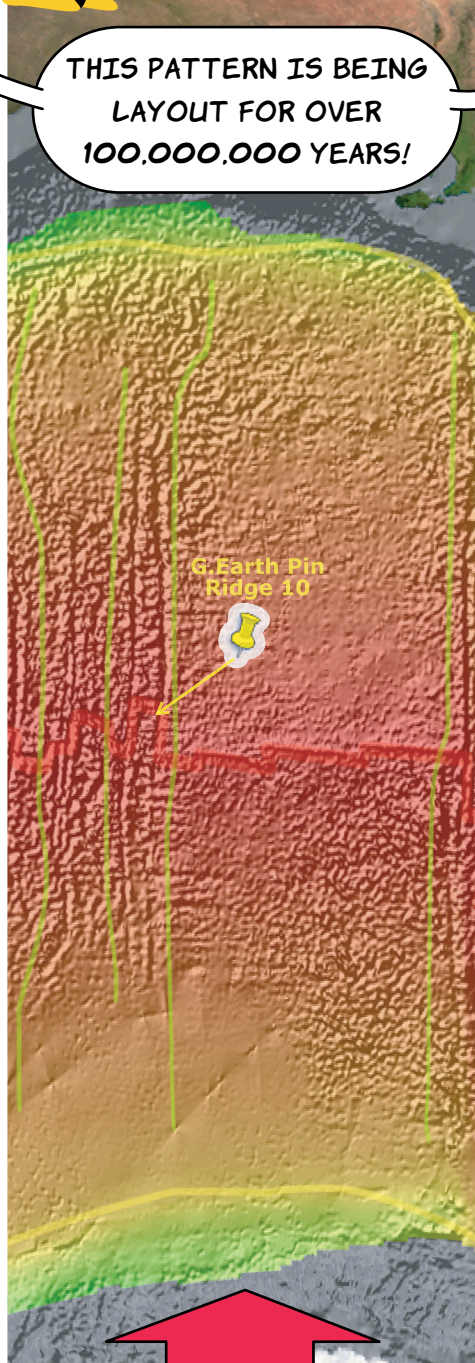
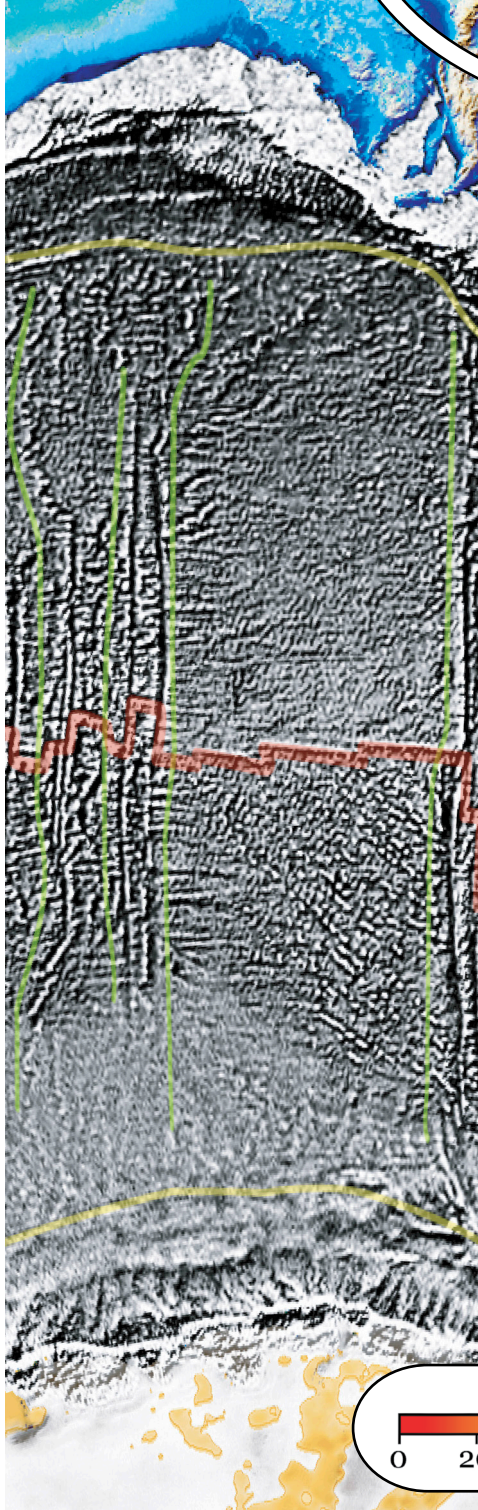
WITH A CLOSER
LOOK YOU CAN
COMPARE THIS PATTERN.
AGAINST ITS AGE AND
THE OCEANIC
CURRENTS!



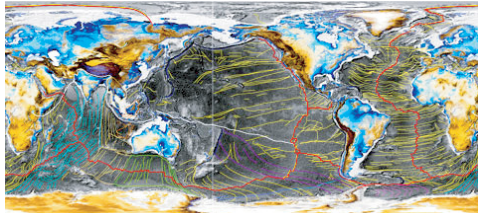
WE
WILL SHOW MANY
OTHER EXAMPLES OF THIS
PATTERN AROUND THE
PLANET! FOLLOW
WITH US!

AND IT IS CONSISTENT
EVEN AGAINST THE STRONG
OCEAN CURRENTS!

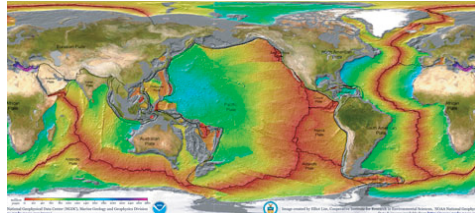
THIS PATTERN IS BEING
LAYOUT FOR OVER
100,000,000 YEARS!



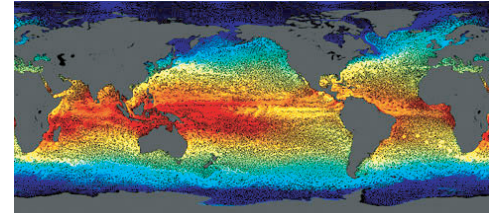
Our Blue 500 Map*¹



Age of the Oceanic Lithosphere Map*¹

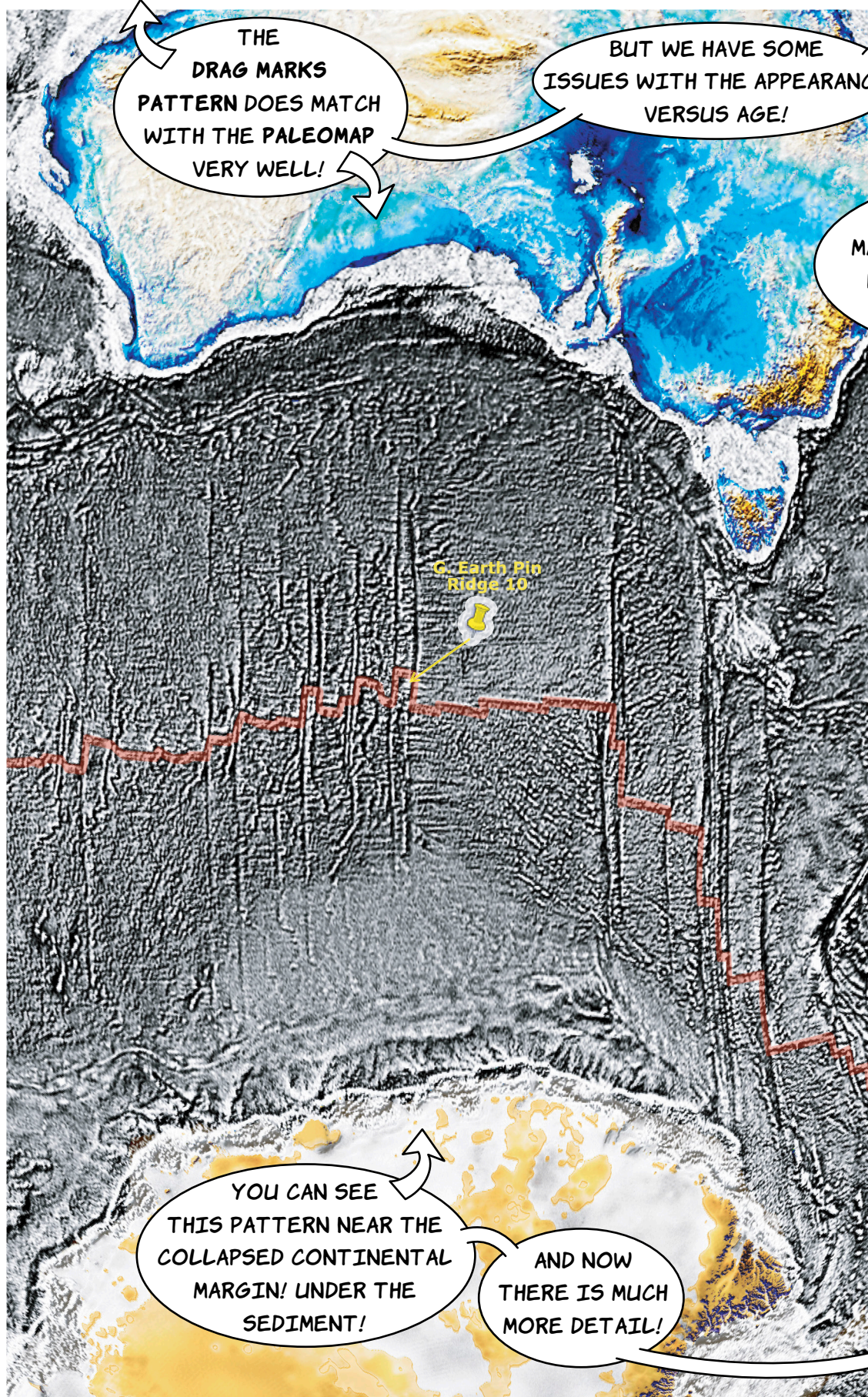
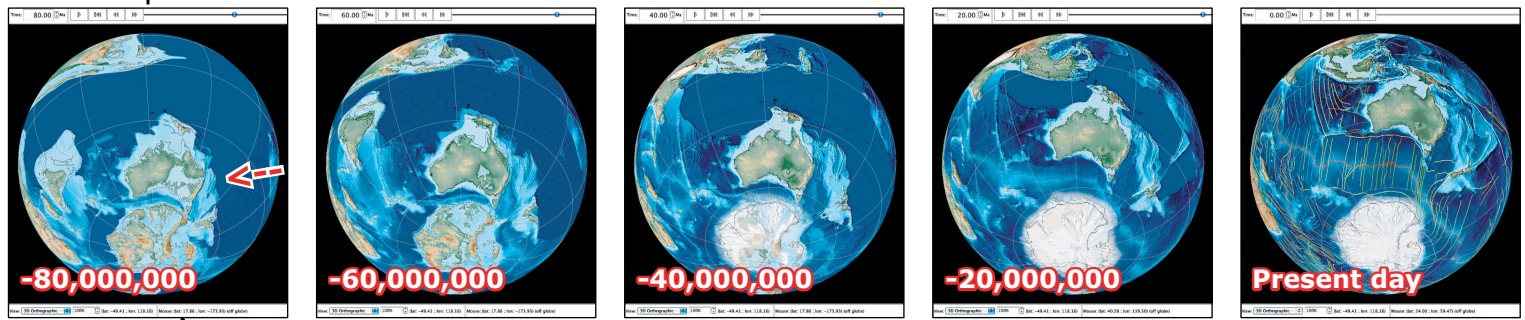


Ocean Currents Map*¹



*1 - All of this Maps available at PoikesTheory.com.br / Earth Maps: http://www.poikestheory.com.br/_earth-maps.html

Paleomap frames in Million Years



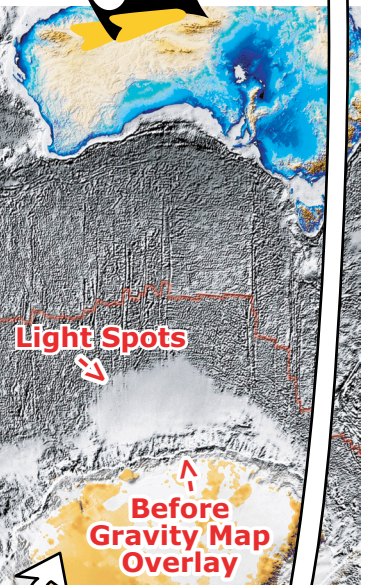
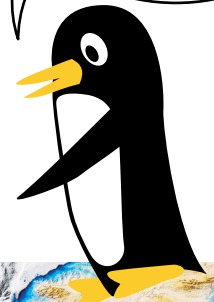
THE
DRAG MARKS
PATTERN DOES MATCH
WITH THE PALEOMAP
VERY WELL!

BUT WE HAVE SOME
ISSUES WITH THE APPEARANCE
VERSUS AGE!

AND
HOW IT CROSS
FREELY THROUGH THE
MID OCEANIC
RIDGE!

WITH THE GRAVITY
MAP YOU CAN REALLY SEE
HOW THIS PATTERN IS
INTERCONTINENTAL!

THE LIGHT SPOTS
ON THE MAP ARE ONLY
REVEALED BY THE
GRAVITY MAP
OVERLAY!



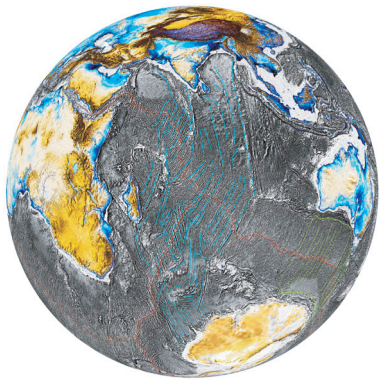
Light Spots

Before
Gravity Map
Overlay

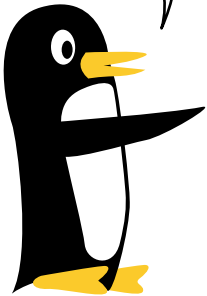
YOU CAN SEE
THIS PATTERN NEAR THE
COLLAPSED CONTINENTAL
MARGIN! UNDER THE
SEDIMENT!

AND NOW
THERE IS MUCH
MORE DETAIL!

WE ARE
BEING LOOKING
AT THIS PATTERN
LONG BEFORE THE
GRAVITY MAP
IMPROVEMENTS!

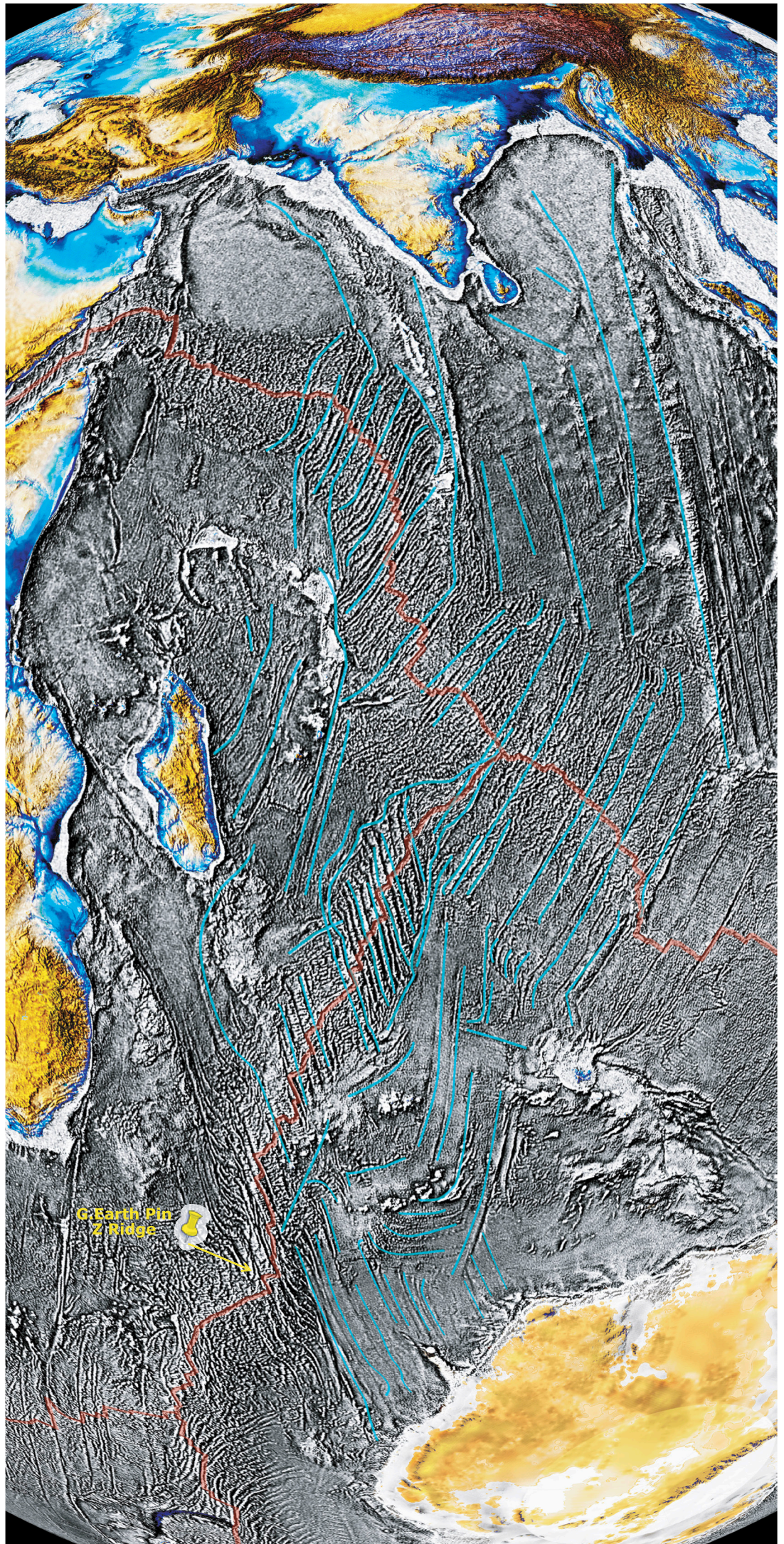
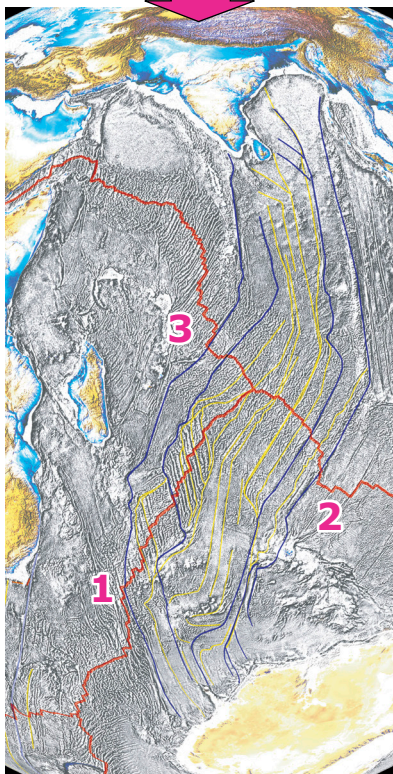


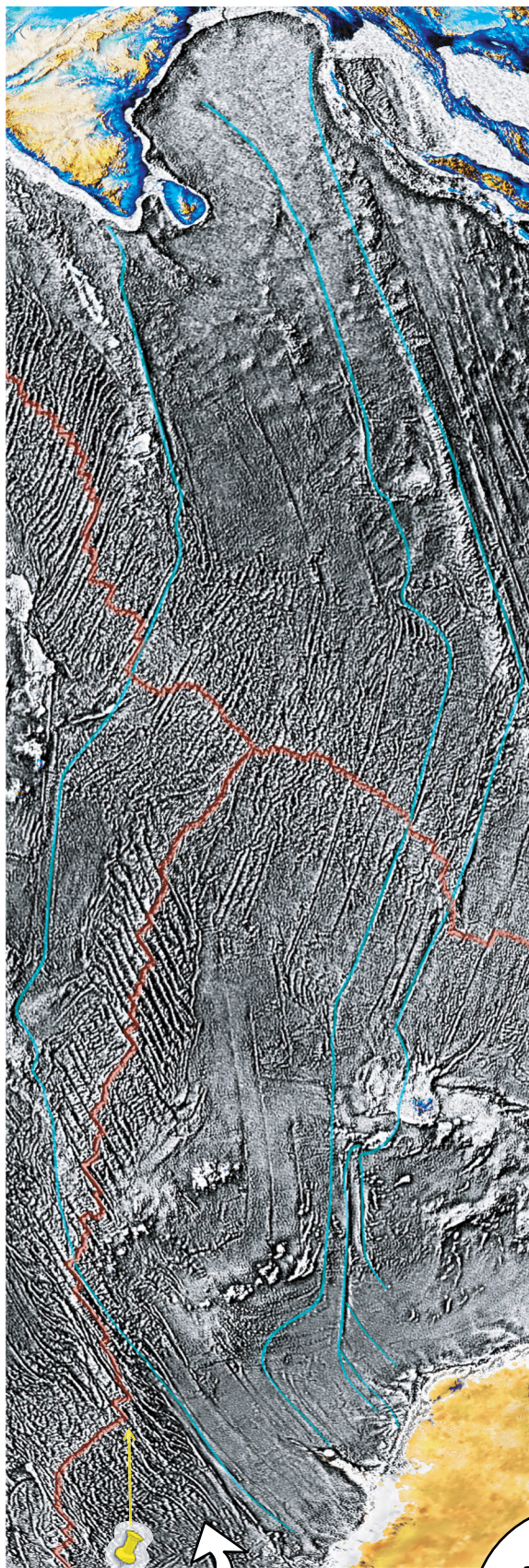
NOW
ASIA! IT CAN BE
BACKTRACKED WITH
THE DRAG MARKS PATTERN
ALL THE WAY FROM
ANTARCTICA!



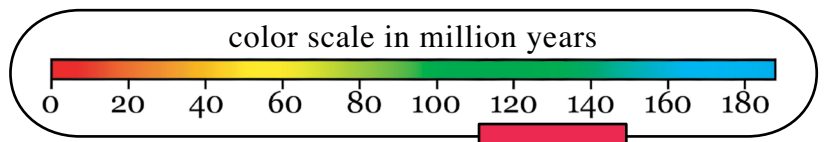
AND THE
PATTERN CUT ACROSS
THE MID-OCEAN RIDGE
ON THREE DIFFERENT
SEGMENTS!

Numbers in Pink for
the crossing points

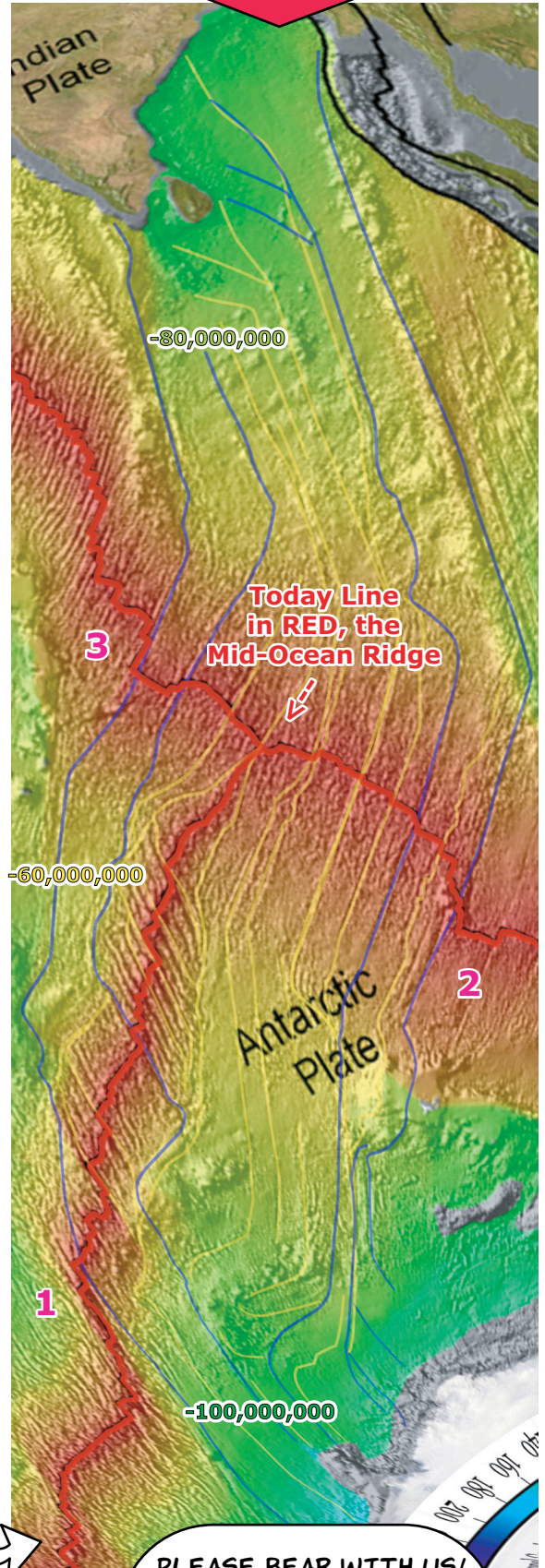
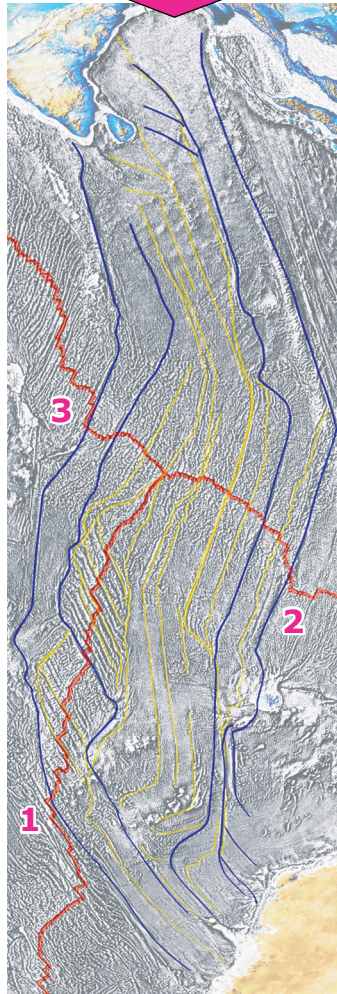




G. Earth Pin
Z Ridge



Numbers in Pink for
the crossing points



Today Line
in RED, the
Mid-Ocean Ridge



WHAT IS ODD
TO SEE HERE IS HOW
THE PATTERN CUT ACROSS
THE MID-OCEAN RIDGE!
(THE RED LINE)

CROSSING THE MID-
OCEAN RIDGE WITH VERY
MODEST VARIATION!

ON 3 DIFFERENT
SEGMENTS OF THE
MID-OCEANIC RIDGE
WHICH IS SUPPOSED TO
BE THE SOURCE OF
THE SPREADING!

LOOKING AT THIS PATTERN IS
REALLY DIFFICULT TO IMAGINE THE
MID-OCEAN RIDGE SPREADING THE SAME
PATTERN BOOT WAYS! FOR THOUSANDS OF
KILOMETERS! IN TENS OF MILLIONS
YEARS! IN SUCH A COHERENT WAY!

PLEASE BEAR WITH US!
WHILE WE SHOW YOU A
FEW MORE SAMPLES TO
INVESTIGATE!

AND THEN WE
WILL DISCLOSURE HOW
WE SEE THIS EVENT!