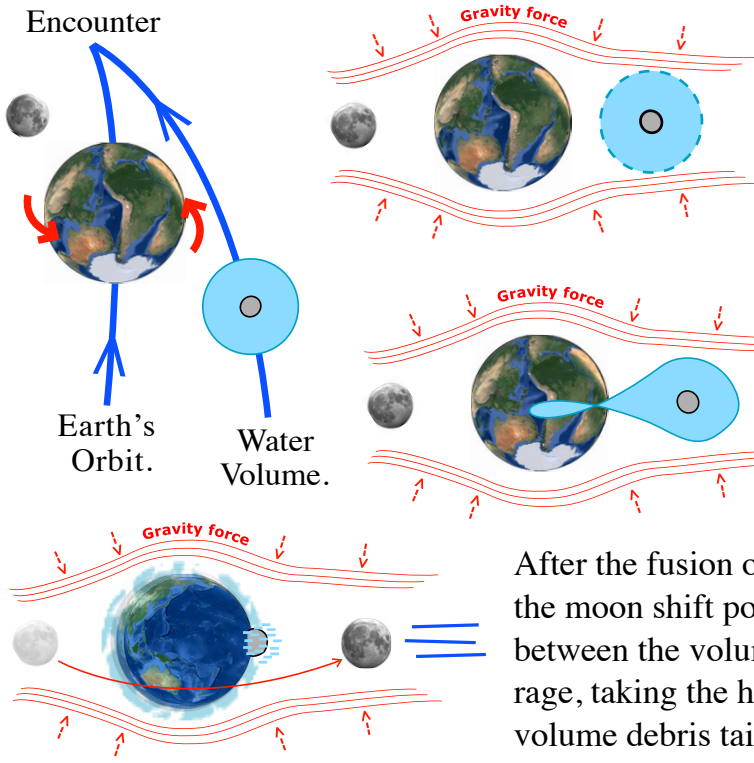
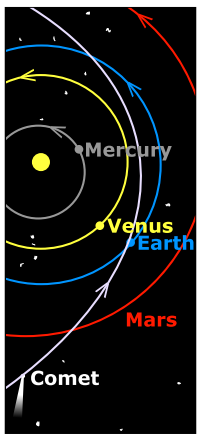


# 03 - The Water.

A large volume of water fell on Earth, possibly by a Comet or lose water dislodged from a another planet, ither way, we can follow it's patch, to see what we call The Pacific Drop event.



Earth and this large volume of water attract each other because of their greater volume.

The moon was left behind at the fusion, because it's smaller volume.

After the fusion of the larger bodies, the moon shift position, to become between the volume and it's entourage, taking the hit of the water volume debris tail.



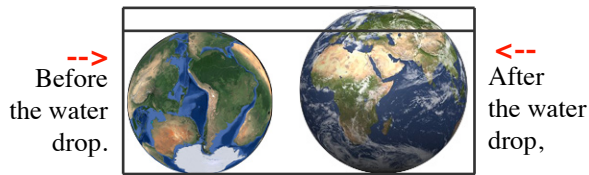
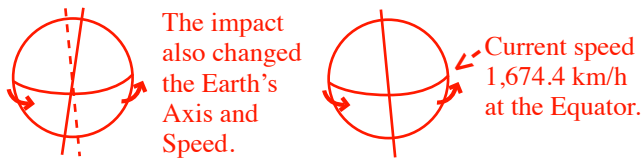
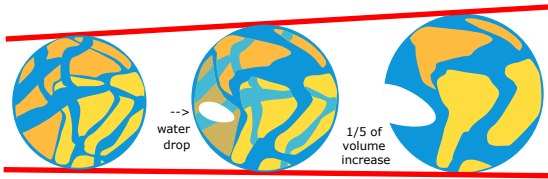
There is evidence of the far side of the Moon, being bombarded by debris.

This event flooded the whole Earth around 10.000 years ago.

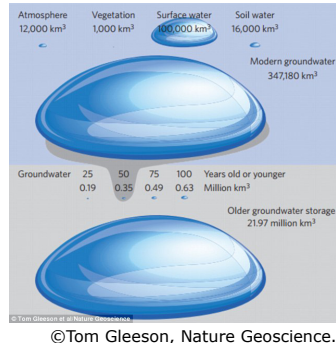


## Effects on Earth:

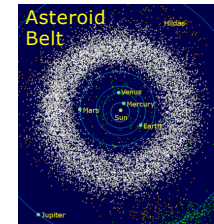
Earth increase, a volume about 1/5 of its previous size, was deposited during this event.



The different volumes of water stored in the global water cycle.

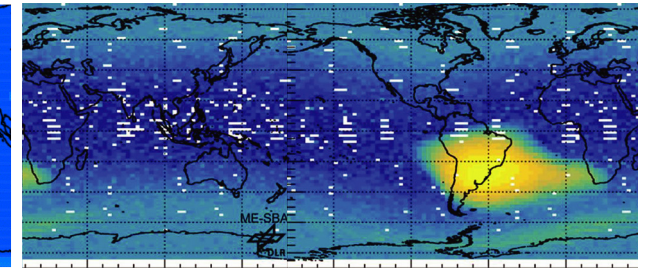
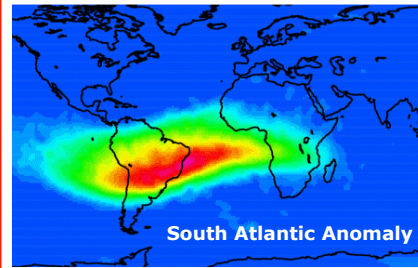


The volume of the water could have come from a huge hollow ice comet that got into Earth's path, then was crushed by greater gravity and sucked into Earth. Or if a meteor blasted a planet like the one in the Asteroid Belt, and its water broke loose in the solar system, entering Earth's orbit, either way, we can see its path...



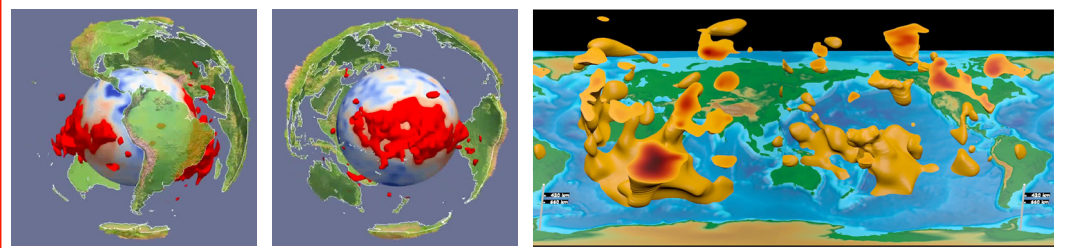
## Follow the water, this path is the evidence of this event.

The South Atlantic Anomaly show the entry point of this Water Volume.



Deutsches Zentrum für Luft- und Raumfahrt German Aerospace Center

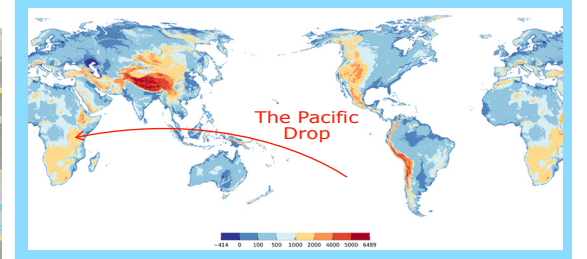
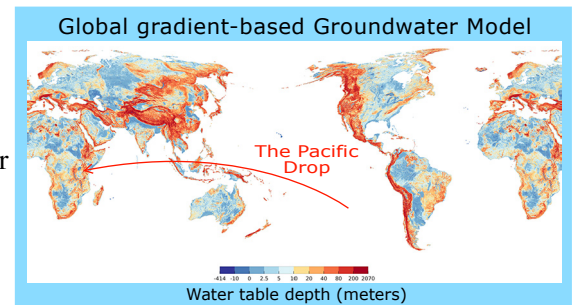
The Mantle Plumes, the Water Volume deposit in the depths of the mantle.



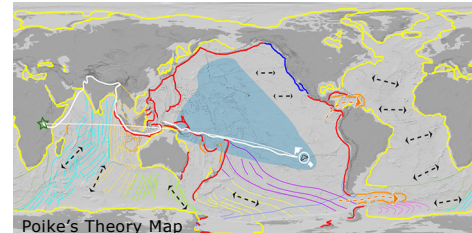
Seismic Tomography of Mantle Structure, Featuring LLSVP.

The Ring of Groundwater, a massive groundwater deposit.

The groundwater deposits are directly related to South Atlantic Anomaly and the Mantle Plumes, please see also paper 02 - The Pacific Rings, and look in to the Deep Ocean Drag Marks Pattern to better understand it's dynamics.



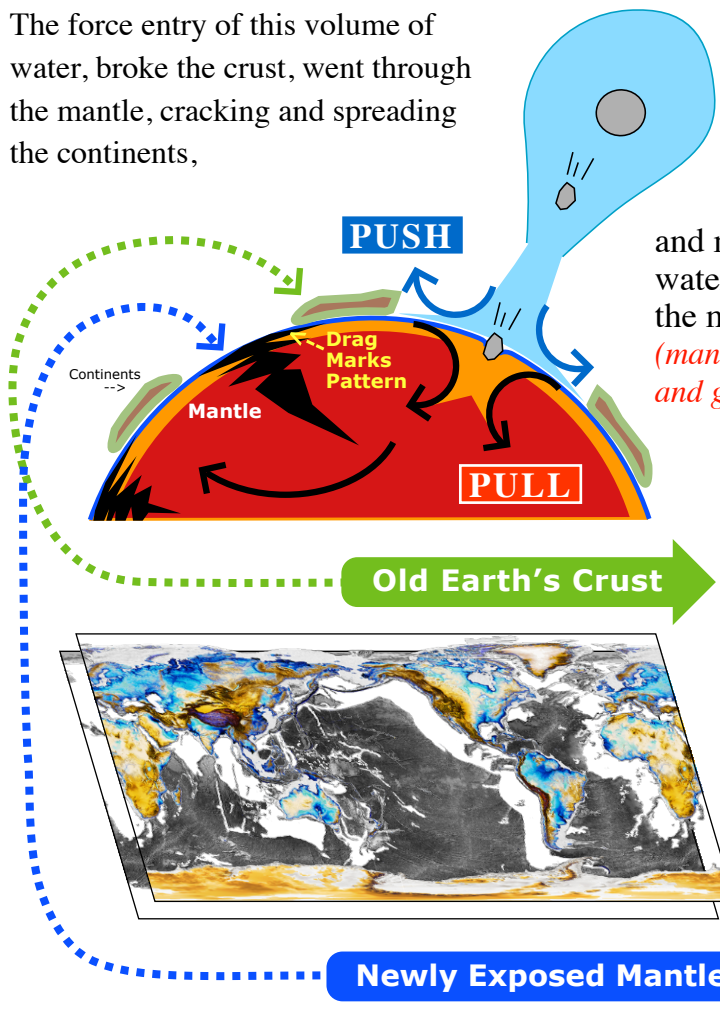
Sketch of the water volume drop.



<https://gmd.copernicus.org/articles/12/2401/2019/gmd-12-2401-2019-assets.html>

## What happened with the water?

The force entry of this volume of water, broke the crust, went through the mantle, cracking and spreading the continents,

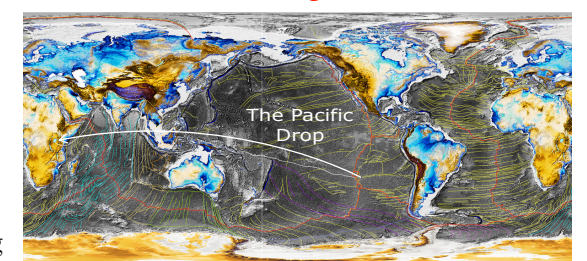


Part of the water spread around the crust. (the flood)

and most of the water broke into the mantle. (mantle plumes, and groundwater)

The Drag Marks Pattern, deep ocean floor Mountain Ranges Pattern.

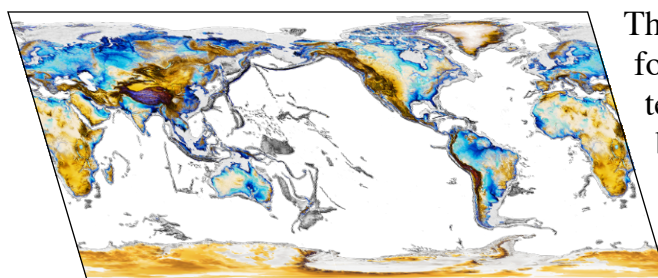
This Pattern draw exactly the spread caused by the great water deposity, that reshape Earth's crust, and redraw it's Tectonic Dynamics, The Pacific Drop as we call it, happened around 10.000 years ago, it took oproximety 11 hours from beginning to end for this event.



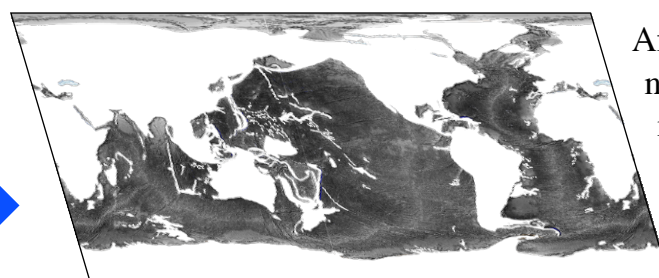
[http://www.poikestheory.com.br/\\_earth-maps.html](http://www.poikestheory.com.br/_earth-maps.html)

Q. So what happened with this massive volume of water that flooded the Earth?

A. It sunk! In the following days, the newly exposed mantle, sunk due its greatest density, along with the water to become the Deep Oceans.



The old Earth's crust was folded, crushed, scattered and subducted, but because of its lower density, stood above the water line, as the water receded.



After the event the newly exposed mantle began to saddle under the gravity pressure and it sank, because it's higher density and weight, draining most of the surface water in to a new deep ocean.

