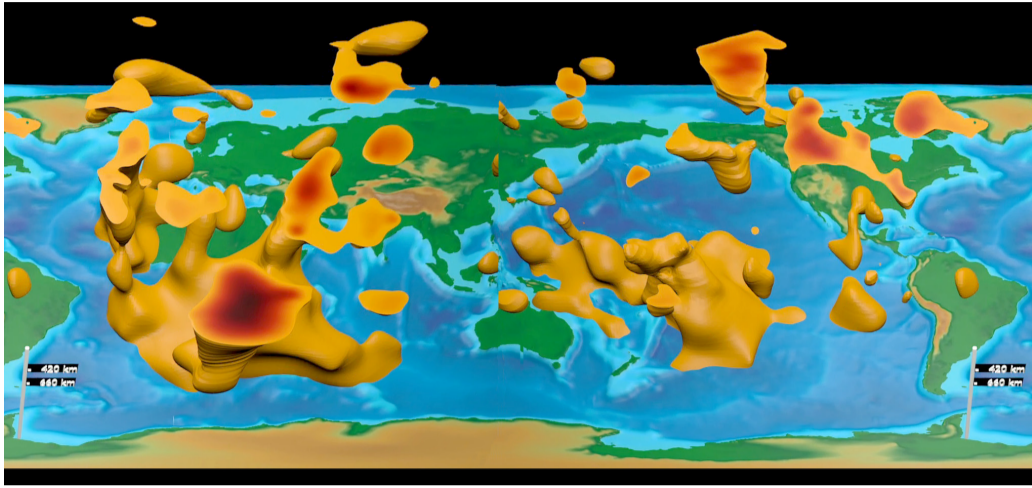


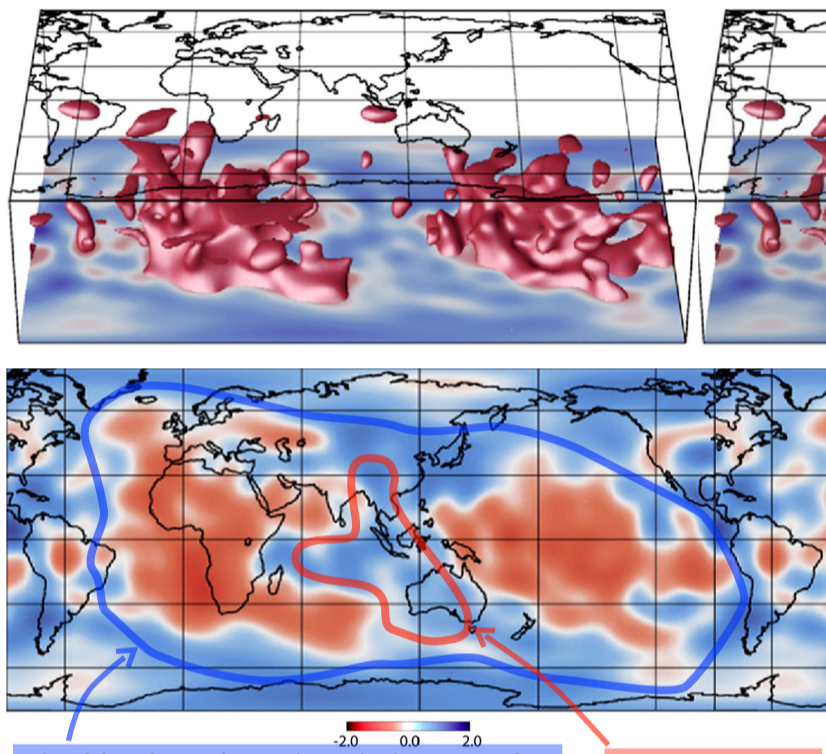
Please think, this is a great puzzle to be analyzed.

3 events that no one really knows why they exist, but they are well documented.

2. Pillars of the Mantle, the deposit.

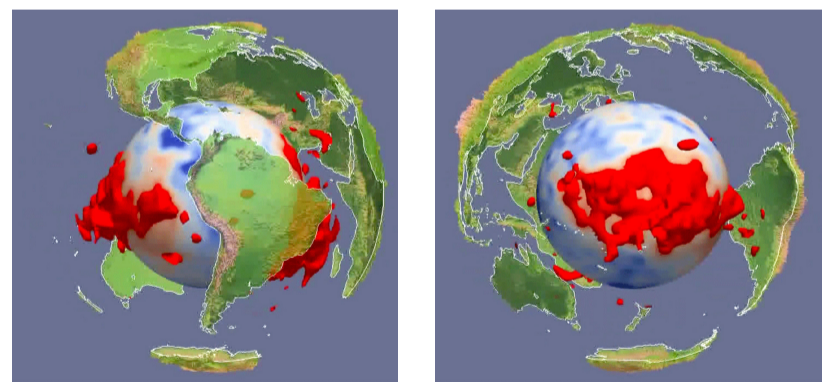


Seismic Tomography of Mantle Structure, Featuring LLSVP

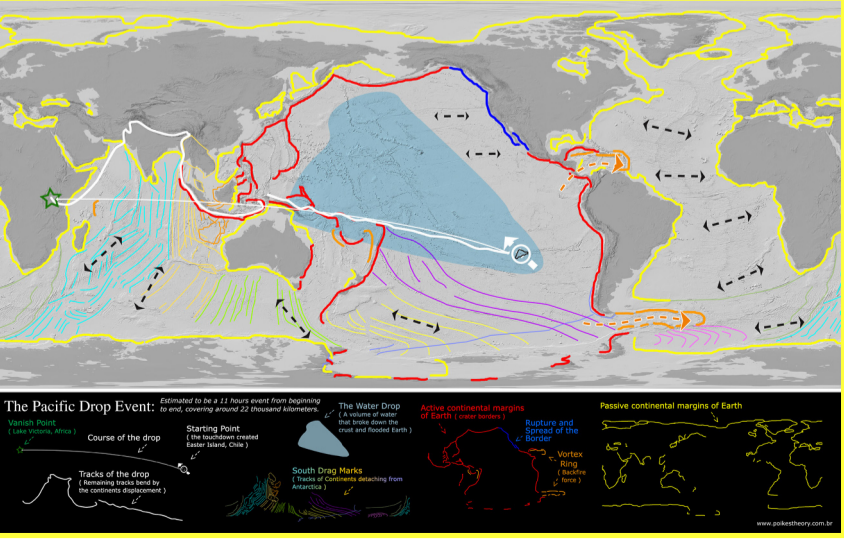


The blue line show the whole area of the deposit upon the event.

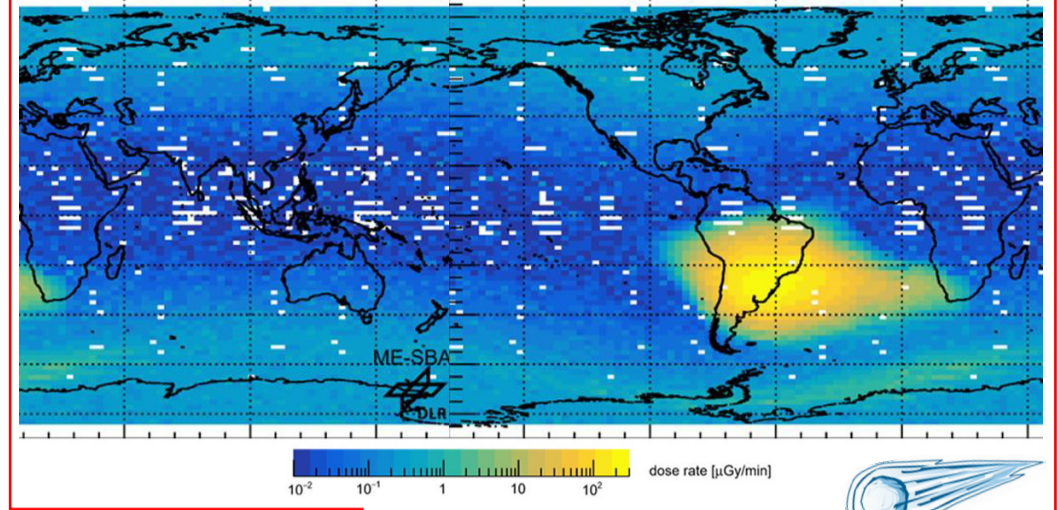
The red line show the fault on the deposit, that is justified by the continental drift over it, during the Pacific Drop event, as shown by the pattern of drag marks.



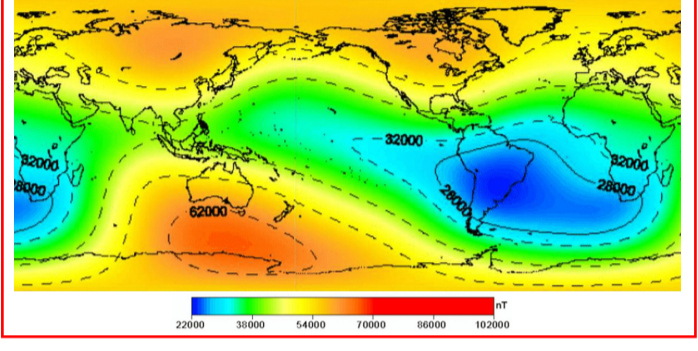
This sketch of the event in larger resolution, maps, documents, and related material to research this theory are available for download at our web site.



1. South Atlantic Anomaly, the entry point.

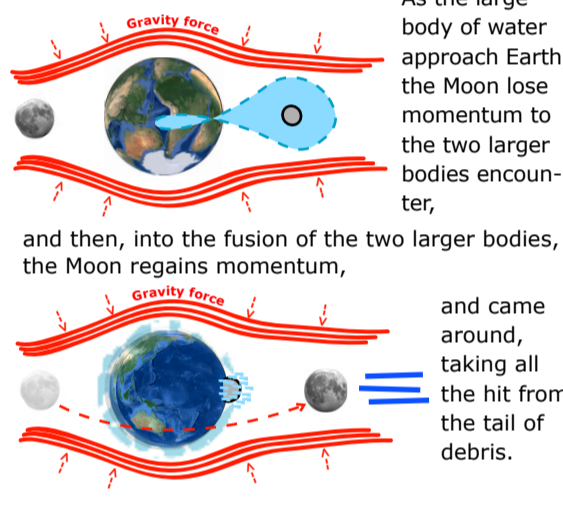


The passing through of a large volume of water caused this anomaly in the Van Allen radiation belt.



we theorize that this 3 events happened together,

it all took place when a large body of water fell on Earth, it caused the South Atlantic Anomaly as the entry point, the continental dispersal as it touch down, and flooded the Earth, also caused the Mantle Pillars deposit, as well as the far side of the Moon that took the hit from its entourage.



As the large body of water approach Earth, the Moon lose momentum to the two larger bodies encounter, and then, into the fusion of the two larger bodies, the Moon regains momentum, and came around, taking all the hit from the tail of debris.

3. Far side of the moon, the shield.

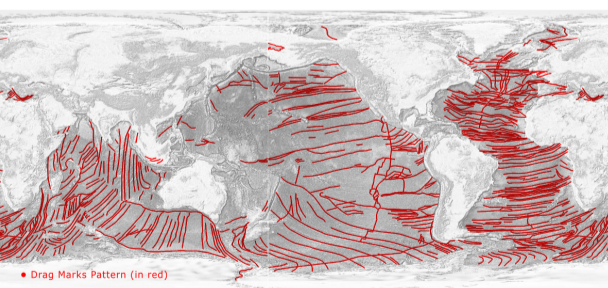


The shield is the far side of the Moon, that clearly took a hit, by a large bombardment from the entourage of this volume that fuse to Earth, the charge it's really visible in the picture above.

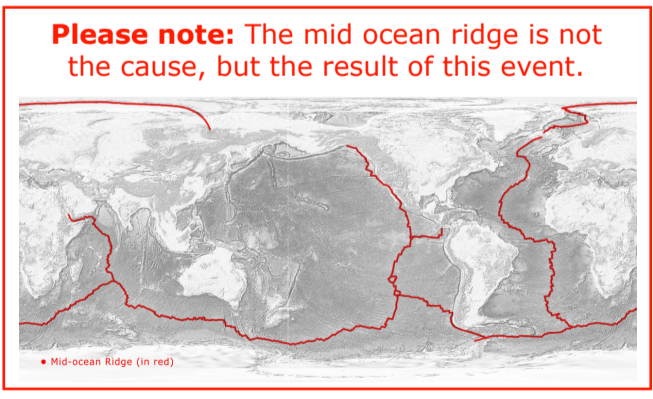
Q. How do we theorize this event?
 A. By visual analysis of the Drag Marks Pattern on the Deep Ocean Floor, and many other factors gathered along in this research project.

Q. What is the Drag Marks Pattern?
 A. We call Drag Marks Pattern the huge chain of Mountain ranges in the ocean floor, a pattern that shows the exact path of the continental dispersal.

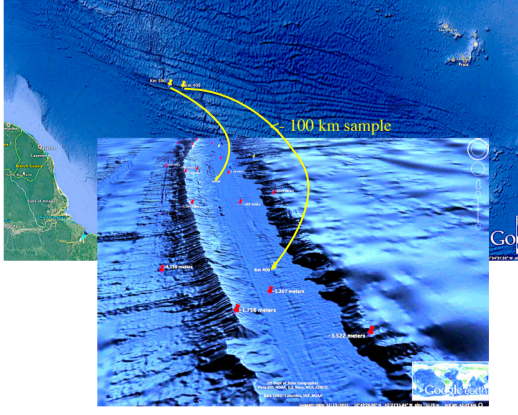
Sketch of the Drag Marks Pattern



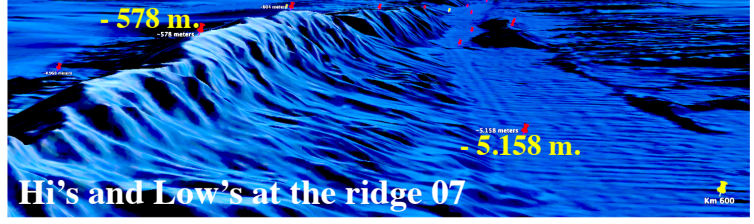
Drag Marks Pattern, mountain range sample.



Please note: The mid ocean ridge is not the cause, but the result of this event.



This Pattern is a wonderful intercontinental collection of mountain ranges that dwarf any thing else above Earth, download our Google Earth Pins, to see more samples.



*** This Paper is dedicated to celebrate the Big Day of Heitor & Monia, Cheers :) and my best wishes to a Happy ninth of July of two thousand twenty two.