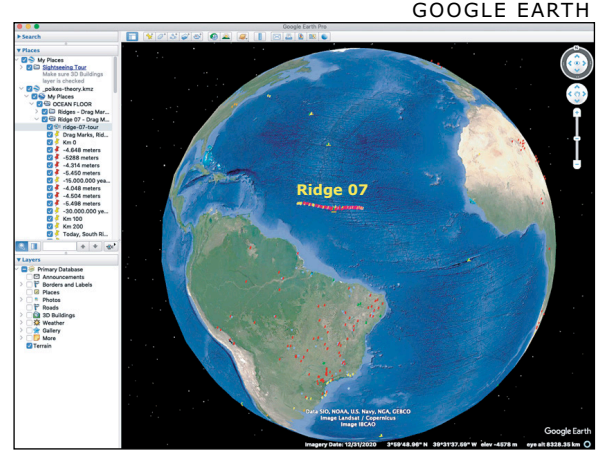
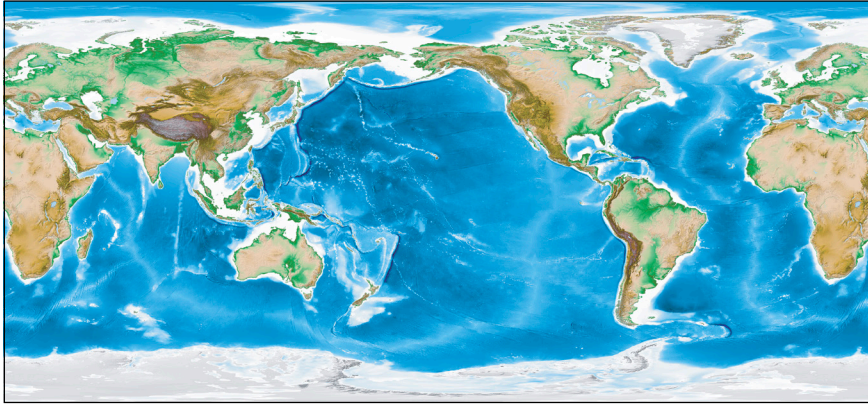


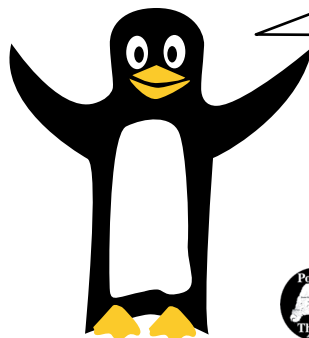
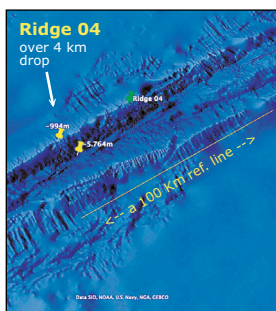
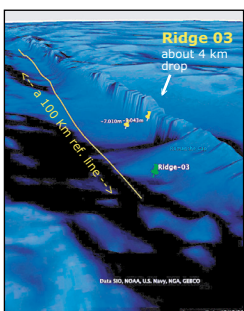
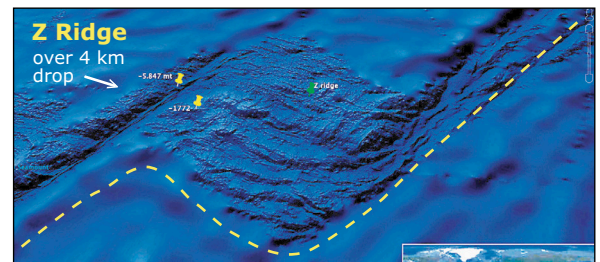
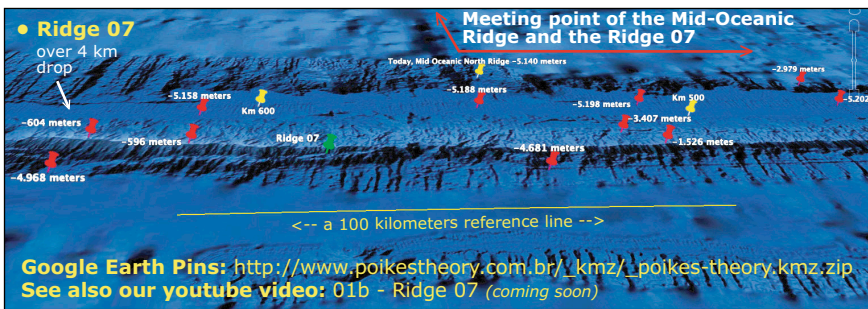
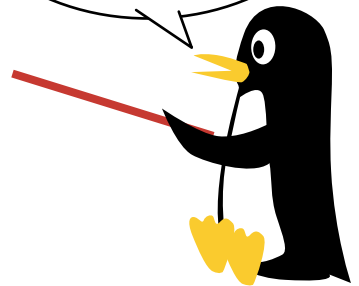
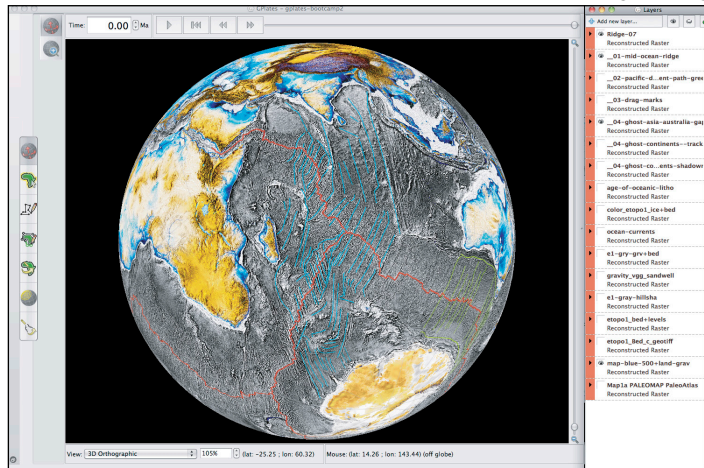
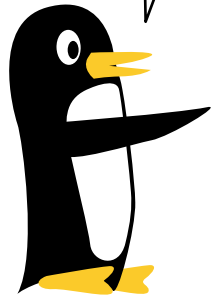
BOOT CAMP # 3

DISCOVER THE DRAG MARKS PATTERN ON THE DEEP OCEAN FLOOR!



HI, MY NAME IS LILY AND I'M GOING TO SHOW YOU HOW YOU CAN DISCOVER THE DRAG MARKS PATTERN ON THE DEEP OCEAN FLOOR!

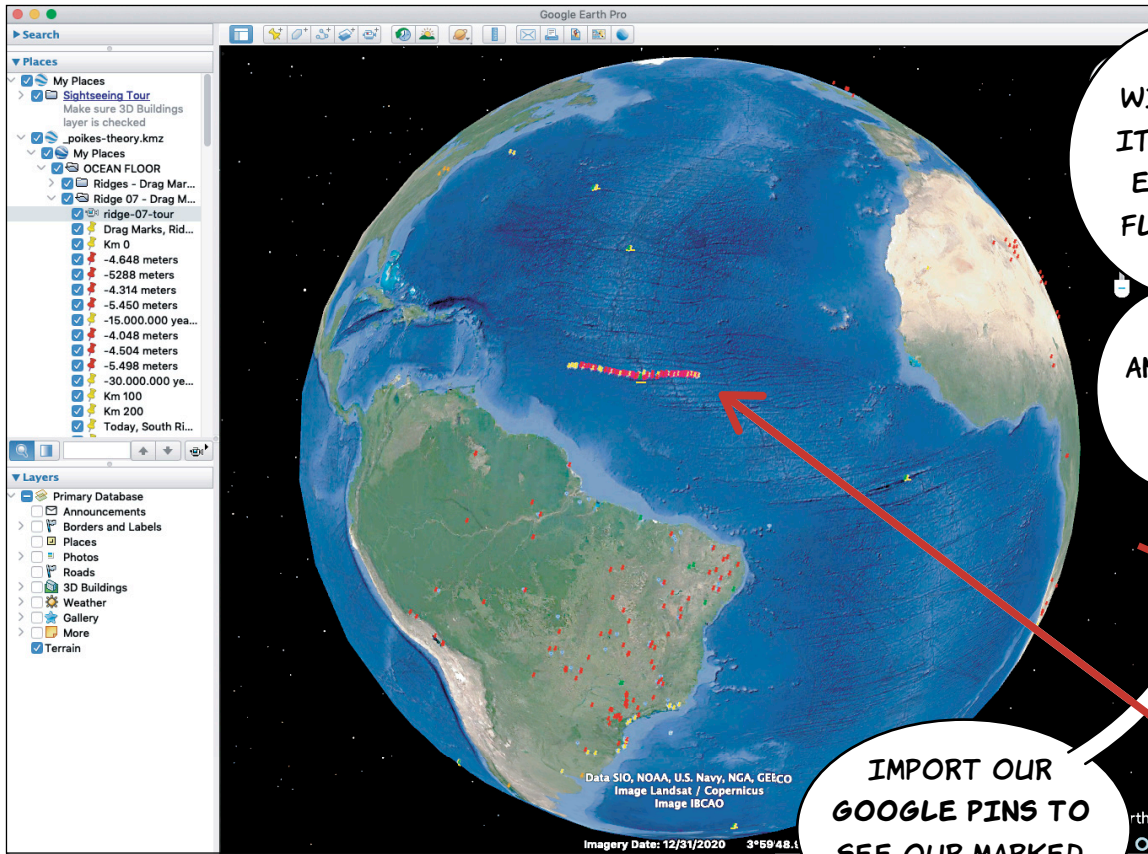
WITH SIMPLE AND FREE TOOLS LIKE GOOGLE EARTH AND GPLATES, YOU CAN LOAD NOAA*1 MAPS AND POIKE'S MAPS!



COME WITH US TO EXPLORE THE CHAINS OF MOUNTAINS IN THIS INCREDIBLE PATTERN OF THE DEEP OCEAN FLOOR!

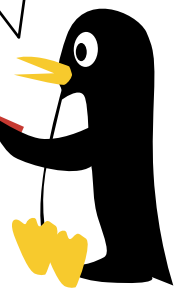
in the PDF version, the text with **ASTERISK *** will have a **Hyperlink** to the **Internet** at the footer.

*1 We work the maps downloaded from NOAA (National Oceanic and Atmospheric Administration). <http://www.noaa.gov>



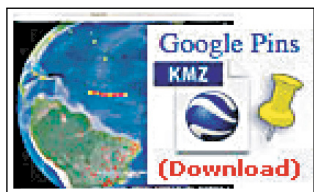
WE CAN START WITH GOOGLE EARTH! IT IS GREAT TOOL TO EXPLORE THE OCEAN FLOOR! HERE IS SOME TIPS!

JUST DOWNLOAD AND INSTALL GOOGLE EARTH TO FOLLOW WITH US!



IMPORT OUR GOOGLE PINS TO SEE OUR MARKED RIDGES!

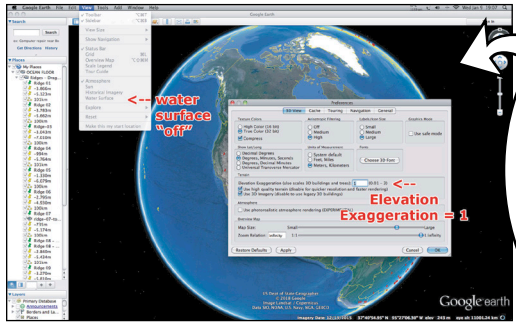
BY DOWNLOADING THE **_poikes-theory.kmz.zip***1 FILE! THEN UNZIP IT AND OPEN WITH YOUR GOOGLE EARTH!



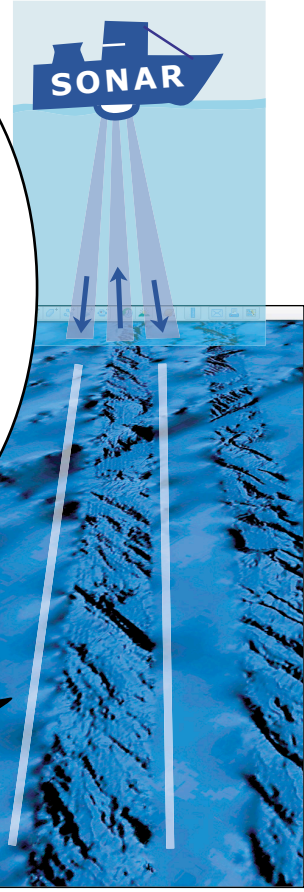
RIDGE 07 PINS

Check our **Boot Camp Online Web Site***2 for videos, links and tutorials on Google Earth under **BCO Resources / Google Earth** tab.

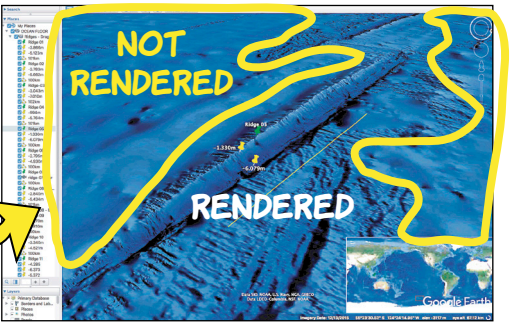
ALSO YOU MAY NEED TO CHECK YOUR GOOGLE EARTH SETTINGS!*3 TO SEE THE RIDGES AS WE DO!



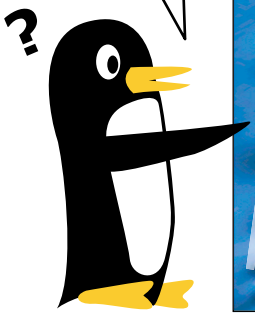
A CURIOSITY! THESE RENDERED RANDOM TRACKS ACROSS THE OCEAN FLOOR ARE MADE BY BOATS! MAPPING THE OCEAN FLOOR WITH SONAR EQUIPMENT! (BATHYMETRY). THAT'S WHY THEY LOOK SO SHARP!



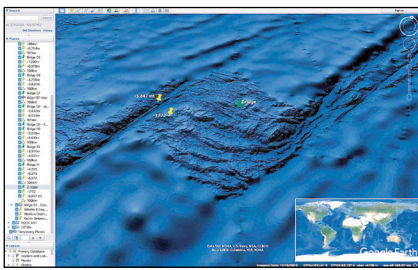
There is only some rendered parts of the ocean floor, but most of it still blurred, not rendered! Because is difficult and time consuming to get data from de Deep Ocean Floor,



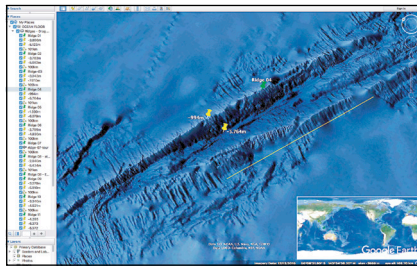
RIDGE 04, 4.7 Km drop.



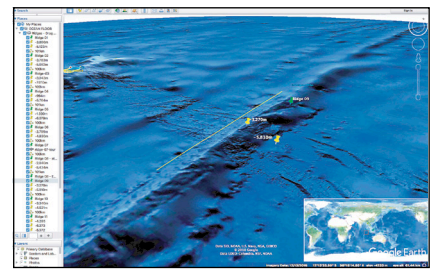
*1 - KMZ file for Google Earth, direct link to download: http://www.poikestheory.com.br/_kmz/_poikes-theory.kmz.zip
 *2 - Boot Camp Online Web Site. (Publications and Resources) Web Site: <http://www.bootcamp.poikestheory.com.br>
 *3 - Google Earth Settings: (our settings) <http://www.poikestheory.com.br/bco/ge-settings.html>



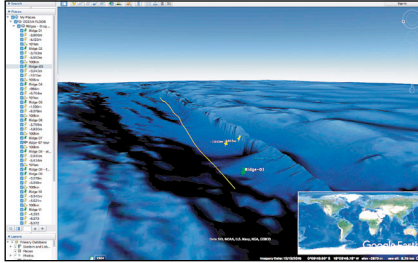
RIDGE Z, 4.1 Km drop.



RIDGE 04, 4.7 Km drop.

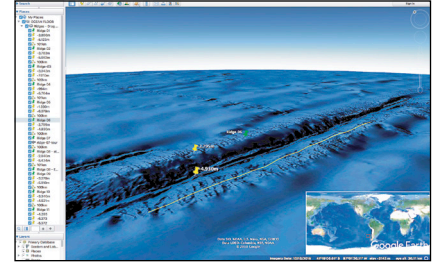


RIDGE 09, 2.5 Km drop.

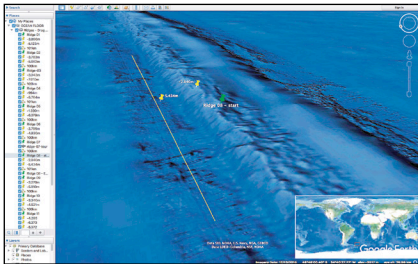


RIDGE 03, 3.9 Km drop.

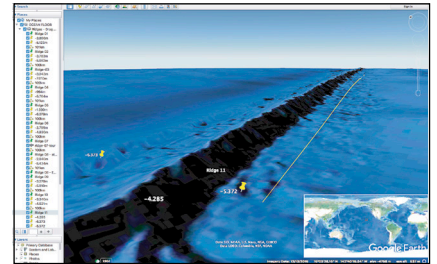
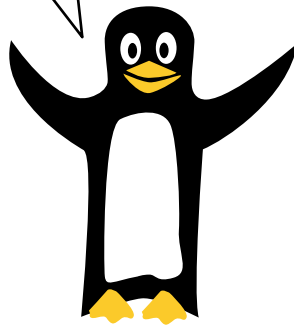
THOSE ARE SOME RIDGES WE MARK DOWN FOR YOU TO FOLLOW WITH OUR GOOGLE EARTH PINS! OR TO WATCH IT ON YOU TUBE: DEEP OCEAN FLOOR RIDGES! *4



RIDGE 06, 2.1 Km drop.



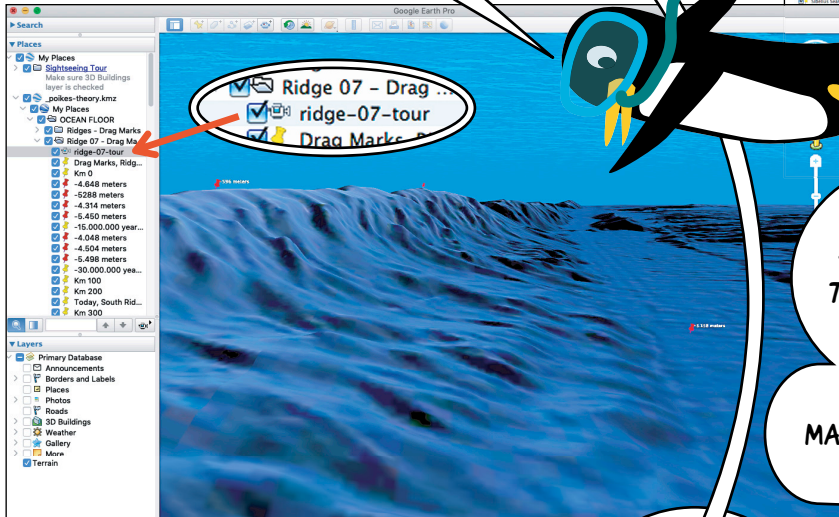
RIDGE 08, 2.5 Km drop.



RIDGE 11, 2 Km drop.

YOU CAN DIVE WITH US! WE MADE A TOUR ON RIDGE 07 *5/*6 SHOWING ITS HIGHS AND LOWS, WHILE IT CROSS THE MID OCEAN RIDGE!

AND SEE IT GO SINKING INTO THE SEDIMENT NEAR THE CONTINENTAL MARGIN!

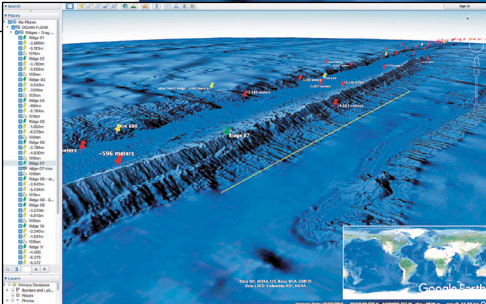
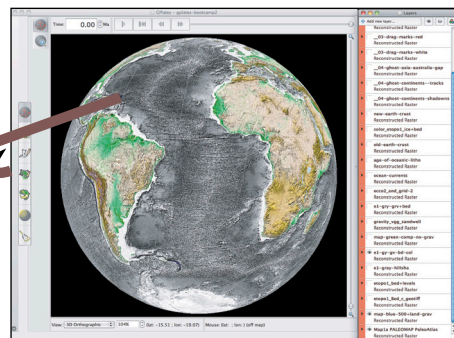


HEI LILY! SHOW THEM THAT WE CAN SEE MORE!

you can follow this tour with our Google Pins Tour or watch on our YouTube! Videos *4/*5/*6

OVERLAYING THE BATHYMETRIC MAPS WITH THE GRAVITY MAP REVEALS THE SUBMERGED PARTS OF THESE RIDGES!

YES GRANDPA! I WILL SHOW THEM IN THE NEXT PAGES!



RIDGE 07, 4.4 Km drop.

*4 - You Tube Video Tour: 00a - Deep Ocean Floor Ridges (en-us), <https://youtu.be/TWLxrMioiE8>
*5 - You Tube Video Tour: Ridge 07 no water, <https://youtu.be/XmAPIFz8XM>
*6 - You Tube Video Tour: Ridge 07 with water, <https://youtu.be/tKJ5uv2igAI>