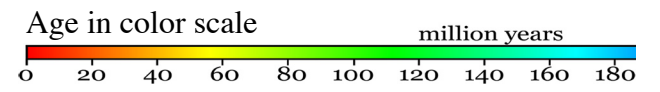
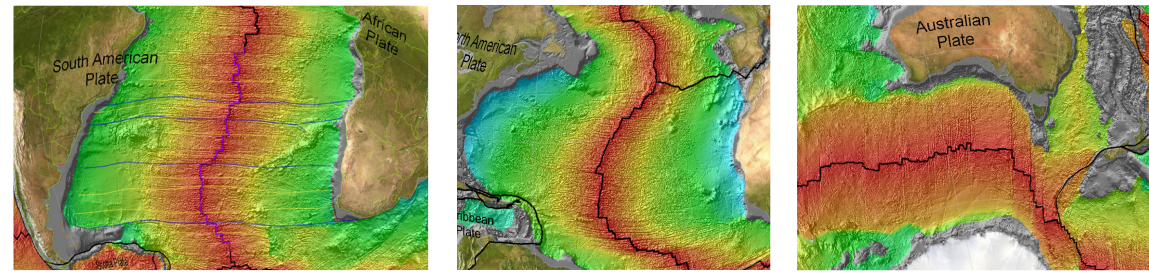


17 - Hot Spots II Continental drift, what happened with Asia?

North American Plate, South American Plate, African Plate, Australia Plate, Antarctic Plate, they all share the same feature. The today line is in the middle of the Continents, or at the breakpoint.



So what happened with Asia Plate?

How did Asia cross over the today line on three different places? Is that even possible?

- 3. Third clear drag mark crossing a today line.
- 2. Second clear drag mark crossing a today line.
- 1. First clear drag mark crossing a today line.

<- Today Line

Note: Hi-Res. maps are available for download at the website.

I believe It shows that the tectonic movement happens at the same time of the continental drift in a single event, that is the reason for the ocean floor pattern to be so consistent with the continental drift.

Continental coast matching profiles, Asia and Antarctica.

